

Newlec®

# LED Dimmers



REXEL

a world of energy

---

PLATED LED DIMMERS

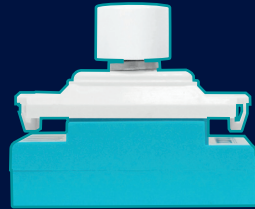
---

LED DIMMING MODULE

---

LED GRID DIMMERS

Which  
dimmer  
do I need?

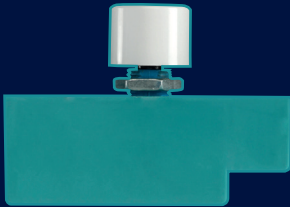


NL8815W  
0-150W

NL8806WA & NL8806BA  
5-250W

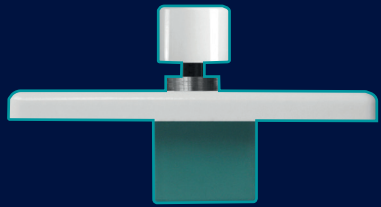
p4

---



NLSL8307  
0-150W

p6



NLSL8306/12  
1 GANG 2-WAY 0-150W

NLSL8306/22  
2 GANG 2-WAY 2 X 0-150W

p7

## NEWLEC LED GRID DIMMERS 2-WAY

**NL8815W (White)**  
**0-150W**

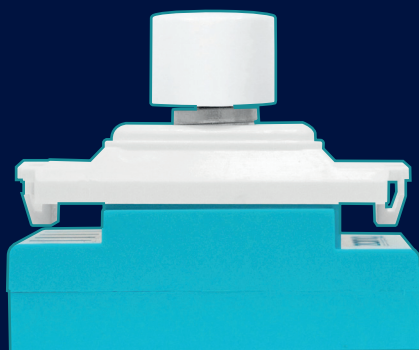
**NL8806WA (White)**  
**5-250W**

**NL8806BA (Black)**  
**5-250W**

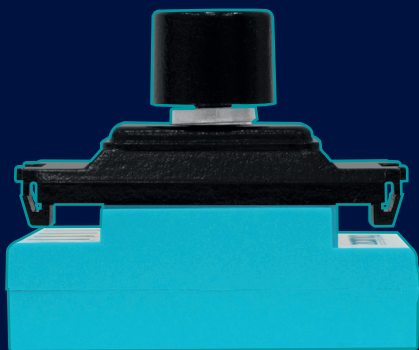
The advanced NL8815W and NL8806WA/ NL8806BA are easy to install and provide an exceptional user experience. Easy-fit installation features includes increased terminal size, a larger control knob and a smaller, streamlined module.

A range of 9 grid adapters are supplied in each pack, including the Euro module, enabling Newlec grid dimmers to be used with many different manufacturer's grid systems. Brand new "Learn and Adapt" technology allows the dimmers to learn the circuit's load and adapt accordingly, supporting an even greater number of lamps per circuit.

As with all of the Newlec LED range of dimmers, built-in digital technology ensures silent dimming without affecting your WiFi, unlike triac dimmers. They also enable flicker-free and silent dimming on quality LED lamps and incorporate programmable problem solving smart settings.

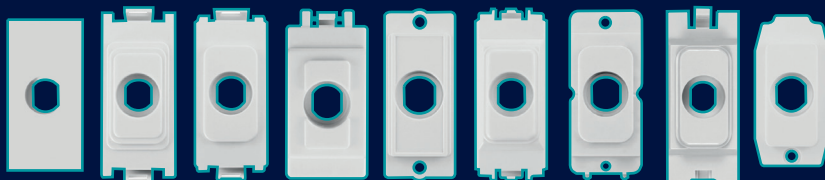


**NL8815W & NL8806WA**



**NL8806BA**

- 0-150W OR 5-250W / VA LED
- FLICKER-FREE & SILENT
- PROGRAMMABLE SMART SETTINGS
- LEARNS AND ADAPTS
- 2-WAY SWITCHING
- EASY-FIT INSTALLATION
- 9 GRID ADAPTORS
- ALSO FITS EURO PLATES



Order Code	Model No.	Type
2501087052	NL8815W	LED 0-150W 2WAY WHITE*
2500933095	NL8806WA	LED 5-250W 2WAY WHITE*
2500933096	NL8806BA	LED 5-250W 2WAY BLACK*



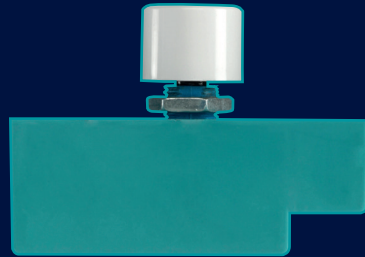
\*MINIMUM BOX DEPTH 35MM

# NEWLEC LED DIMMING MODULE 2-WAY

## NLSL8307 0-150W

Introducing the NLSL8307 – incorporating the latest, next-generation dimming technology. With the Newlec smart settings, learn and adapt technology, easy-fit installation and even greater lamp compatibility the NLSL8307 delivers flicker-free and silent dimming on every 0-150W LED installation. Ideal for the retrofit market e.g. upgrading from tungsten to LED without having to change decorative plates.

Common complaints such as low-end flicker, drop out, lamps out of sync with each other or failing to turn back on, these LED headaches have a big impact on user experience and can result in unnecessary call outs. All of these issues can be fixed with the programmable smart settings. Simple to programme and designed not to revert to programming mode once installed, the smart settings enable you to set the minimum level, start level and boost level, ensuring the ultimate user experience with flicker-free and silent dimming every time.



NLSL8307

- 0-150W / VA LED
- FLICKER-FREE & SILENT
- PROGRAMMABLE SMART SETTINGS
- LEARNS AND ADAPTS
- 2-WAY SWITCHING
- EASY-FIT INSTALLATION



Order Code	Model No.	Type
2501087055	NLSL8307	2WAY MODULE LED 0-150W*

\*MINIMUM BOX DEPTH 25MM

## NEWLEC SLIMLINE WHITE PLATED LED DIMMERS 2-WAY

**NLSL8306/12**  
**1 GANG 2-WAY 0-150W**

**NLSL8306/22**  
**2 GANG 2-WAY 2 X 0-150W**

The Newlec NLSL8306 plate mounted dimmers incorporate next-generation, digital technology, built into a fit and forget plate module. Available in slimline white plastic – the NLSL8306 range offers an easy to install and aesthetic choice, at an affordable price.

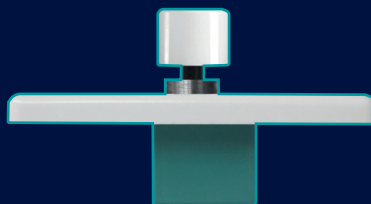
With integrated technology that can be fitted straight out of the box, the NLSL8306 features programmable smart settings for perfect performance even at low levels. It's available in two versions that can support an impressive dimming range of either 1 gang 2 way 0-150W or 2 gang 2 way 2 x 0-150W.



NLSL8306/12



NLSL8306/22



- 0-150W / VA LED
- FLICKER-FREE & SILENT
- PROGRAMMABLE SMART SETTINGS
- INTEGRATED NEXT-GENERATION TECHNOLOGY
- 2-WAY SWITCHING
- EASY TO INSTALL
- 1 AND 2 GANG



Order Code	Model No.	Type
2501087053	NLSL8306/12	1G 2W LED 0-150W*
2501087054	NLSL8306/22	2G 2W LED 2 X 0-150W*

\*MINIMUM BOX DEPTH 25MM

# Newlec®

Rexel UK  
Eagle Court 2,  
Hatchford Brook,  
Hatchford Way,  
Sheldon,  
Birmingham,  
B26 3RZ  
[www.rexel.co.uk](http://www.rexel.co.uk)

0800 783 6909

To find your nearest branch go to:  
[www.rexel.co.uk/branchlocator](http://www.rexel.co.uk/branchlocator)

RX00009