

Enclosures



Steel Enclosures

In addition to the new and improved range of Newlec GRP and steel enclosures, the extended range now includes IP66 steel terminal boxes with screw fit lid, IP66 electrical boxes with hinged lid and a range of common climate control products in order to fulfil the majority of requirements an electrical contractor may have.

As well as this increased Newlec offer we have introduced a number of Rittal Alliance partners into our branch network. In partnership with Rittal Ltd, the number one supplier of enclosures into the UK, Newey & Eyre can offer an even wider range of Rittal branded enclosure products for every application from small terminal boxes to a full suite of floor standing enclosures.

Please note all Newlec products in the guide have an NL code and are illustrated in bold.

The Rittal branded products are available from the key alliance partners;

Alliance partner branches:
Falkirk, Runcorn, Leeds, Derby, Birmingham & Peterborough

Wall Mount Steel Enclosures



- Enclosures include zinc plated mounting plate.
- All round foamed-in PU door seal.
- Colour RAL 7035 powder coat textured finish.
- Ingress protection IP66.
- Impact protection IK08.
- Gland plate in base.
- For single-door enclosures hinged on right, may be swapped to left (except NLME302015R).
- Approvals: UL, CSA, TUV, Lloyds Register of shipping, VDE, Germanischer Lloyd, Russian Maritime Register of shipping, Bureau Veritas.
- Built to EN62208:2011.

Order Code	Model No.	Dimensions (mm)					Door Locks	Weight (kg)
		Enclosure			Mounting Plate			
		H	W	D	W	H		
2500907763	NLME302015R	300	200	155	162	275	1	4,5
2500907764	NLME303021R	300	300	210	254	275	1	7,0
2500907765	NLME403021R	400	300	210	254	375	1	8,8
2500907766	NLME383821R	380	380	210	334	355	1	9,8
2500907767	NLME504021R	500	400	210	354	475	2	13
2500907768	NLME505021R	500	500	210	449	470	2	16,8
2500194205	1350.500	500	500	300	449	470	2	19,6
2500907769	NLME603821R	600	380	210	334	570	2	15,6
2500907770	NLME606025R	600	600	250	549	570	2	24,8
2500193988	1057.500	700	500	250	449	670	2	31,2
2500907771	NLME766035R	760	600	210	549	730	2	32,1
2500194257	1376.500	760	600	350	549	730	2	36,0
2500194012	1090.500	1000	600	250	539	955	2	50,5

Wall Mount Steel Enclosure Accessories



Rail for Interior Installation

Wall Mounting Bracket

Key Lock

Rain Canopy

Enclosures		Accessories							
Order Code	Model No.	Rail for Interior Installation (Qty 1)		Wall Mounting Bracket (Qty 4)		Key Lock (Qty 1)		Rain Canopy	
		Order Code	Model No.	Order Code	Model No.	Order Code	Model No.	Order Code	Model No.
2500907763	NLME302015R	-	-	2500907773	NLMEMBRKT	2500907772	NLMELOCKR	-	-
2500907764	NLME303021R	1051091910	2383.210	2500907773	NLMEMBRKT	2500907772	NLMELOCKR	-	-
2500907765	NLME403021R	1051091910	2383.210	2500907773	NLMEMBRKT	2500907772	NLMELOCKR	-	-
2500907766	NLME383821R	1051091910	2383.210	2500907773	NLMEMBRKT	2500907772	NLMELOCKR	2500371213	2501.500
2500907767	NLME504021R	1051091910	2383.210	2500907773	NLMEMBRKT	2500907772	NLMELOCKR	-	-
2500907768	NLME505021R	1051091910	2383.210	2500907773	NLMEMBRKT	2500907772	NLMELOCKR	-	-
2500194205	1350.500	1051091912	2383.300	2500907773	NLMEMBRKT	2500907772	NLMELOCKR	-	-
2500907769	NLME603821R	1051091910	2383.210	2500907773	NLMEMBRKT	2500907772	NLMELOCKR	2500371213	2501.500
2500907770	NLME606025R	1051091911	2383.250	2500907773	NLMEMBRKT	2500907772	NLMELOCKR	-	-
2500193988	1057.500	1051091911	2383.250	2500907773	NLMEMBRKT	2500907772	NLMELOCKR	-	-
2500907771	NLME766035R	1051091910	2383.210	2500907773	NLMEMBRKT	2500907772	NLMELOCKR	2500371214	2502.500
2500194257	1376.500	1051091913	2383.350	2500907773	NLMEMBRKT	2500907772	NLMELOCKR	2500371223	2511.500
2500194012	1090.500	1051091911	2383.250	2500907773	NLMEMBRKT	2500907772	NLMELOCKR	-	-

Wall Mount GRP Enclosures

- Fibreglass reinforced unsaturated polyester.
- Enclosures include zinc plated mounting plate.
- All round foamed-in PU door seal.
- Twin seal on the top and bottom edges of the door as integral rain protection strip.
- Colour similar to RAL 7035.
- Ingress protection IP66.
- Impact protection IK08.
- Door hinged on right can be swapped to left.
- Approvals: TUV, Lloyds Register of shipping, Germanischer Lloyd, Russian Maritime Register of shipping, Bureau Veritas.
- Built to EN62208:2011.



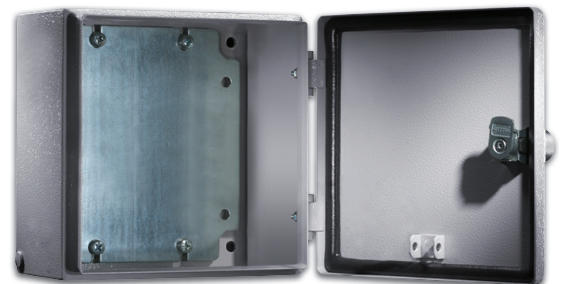
Order Code	Model No.	Dimensions (mm)					No. of Locks	Weight (kg)
		H	W	D	Mounting Plate W H			
2500907753	NLGRP302015R	300	200	150	145	250	1	3.4
2500907754	NLGRP352515R	350	250	150	195	300	1	4.3
2500907755	NLGRP403020R	400	300	200	245	350	2	5.9
2500907756	NLGRP404020R	400	400	200	345	350	2	7.9
2500907757	NLGRP604020R	600	400	200	345	550	2	11.5
2500907758	NLGRP606020R	600	600	200	545	550	2	15.9
2500907759	NLGRP806030R	800	600	300	517	750	3 Point Locking System	26.5
2500907760	NLGRP1008030R	1000	800	300	717	950	3 Point Locking System	41.7

Enclosures		Accessories			
Order Code	Model No.	Wall Mounting Bracket (Qty 4)		Key Lock (Qty 1)	
		Order Code	Model No.	Order Code	Model No.
2500907753	NLGRP302015R	2500907761	NLGRPMBRKT	2500907762	NLGRPLOCKR
2500907754	NLGRP352515R	2500907761	NLGRPMBRKT	2500907762	NLGRPLOCKR
2500907755	NLGRP403020R	2500907761	NLGRPMBRKT	2500907762	NLGRPLOCKR
2500907756	NLGRP404020R	2500907761	NLGRPMBRKT	2500907762	NLGRPLOCKR
2500907757	NLGRP604020R	2500907761	NLGRPMBRKT	2500907762	NLGRPLOCKR
2500907758	NLGRP606020R	2500907761	NLGRPMBRKT	2500907762	NLGRPLOCKR
2500907759	NLGRP806030R	2500907761	NLGRPMBRKT	2500907762	NLGRPLOCKR
2500907760	NLGRP1008030R	2500907761	NLGRPMBRKT	2500907762	NLGRPLOCKR



Wall Mount Steel Electrical Box

- Sheet steel enclosure with hinged door.
- Enclosures include zinc plated mounting plate.
- All round foamed-in PU door seal.
- Colour RAL 7035 powder coat textured finish.
- Protection category - IP66 IEC 60 529 complies with NEMA 4.
- 180 degree hinged door.
- Approvals: UL, CSA, TUV, Lloyds Register of shipping, VDE, Germanischer Lloyd, Russian Maritime Register of shipping, Bureau Veritas.
- Built to EN62208:2011.



Order Code	Model No.	Dimensions (mm)					Weight (kg)
		H	W	D	Mounting Plate W H		
2500907740	NLMEB151580	150	150	80	125	135	1,7
2500907741	NLMEB202012	200	200	120	175	185	2,8
2500907742	NLMEB203012	200	300	120	175	285	3,6
2500907743	NLMEB303012	300	300	120	275	285	5,0
2500907744	NLMEB304012	300	400	120	275	385	6,4

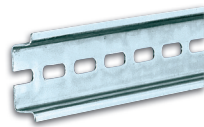
Enclosures		Accessories					
Order Code	Model No.	Wall Mounting Bracket (Qty 4)		Pole Clamp (Qty 1)		Mounting Clip (Qty 30)	
		Order Code	Model No.	Order Code	Model No.	Order Code	Model No.
2500907740	NLMEB151580	2500023158	1590.000	2500023023	2584.000	1051091821	2309.000
2500907741	NLMEB202012	2500023158	1590.000	2500023023	2584.000	1051091821	2309.000
2500907742	NLMEB203012	2500023158	1590.000	2500023023	2584.000	1051091821	2309.000
2500907743	NLMEB303012	2500023158	1590.000	2500023023	2584.000	1051091821	2309.000
2500907744	NLMEB304012	2500023158	1590.000	2500023023	2584.000	1051091821	2309.000

Wall Mount Steel Terminal Box



- Sheet steel enclosure with screwed lid.
- All round foamed-in PU cover seal.
- Colour RAL 7035 powder coat textured finish.
- Ingress Protection - IP66 to IEC 60529, complies with NEMA 4.
- Quick-action lid fixing screw including plastic bushes.
- Approvals: UL, CSA, TUV, Lloyds Register of shipping, VDE, Germanischer Lloyd, Russian Maritime Register of shipping, Bureau Veritas.
- Built to EN62208:2011.

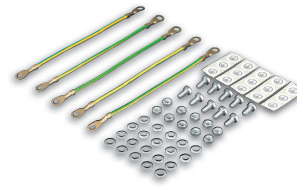
Order Code	Model No.	Dimensions (mm)			Weight (kg)
		H	W	D	
2500907745	NLMTB151580	150	150	80	1,4
2500907746	NLMTB202080	200	200	80	1,9
2500907747	NLMTB151512	150	150	120	1,6
2500907748	NLMTB202012	200	200	120	2,3
2500907749	NLMTB301512	300	150	120	2,6
2500907750	NLMTB302012	300	200	120	3
2500907751	NLMTB303012	300	300	120	4,0
2500907752	NLMTB403012	400	300	120	4,8



Support Rail



Cover Hinge



Earthing Set



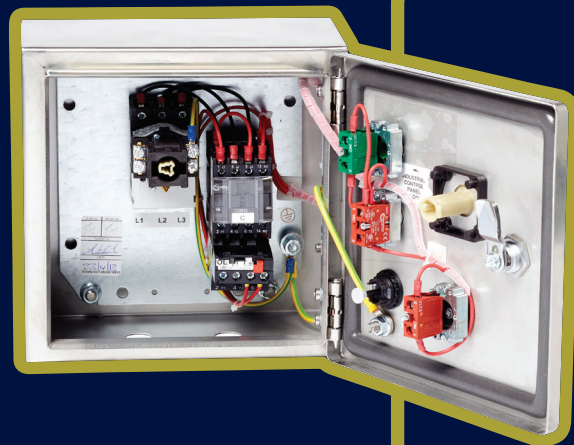
Wall Mounting Bracket

Enclosures		Accessories									
Order Code	Model No.	Mounting Plate (Qty 1)		Support Rail TS 35/15 (Qty 10)		Cover Hinge (Qty 6)		Earthing Set (Qty 5)		Wall Mounting Bracket (Qty 4)	
		Order Code	Model No.	Order Code	Model No.	Order Code	Model No.	Order Code	Model No.	Order Code	Model No.
2500907745	NLMTB151580	2500022901	1560.700	2500121456	2314.000	1051091783	1591.000	2500371421	2570.100	2500023158	1590.000
2500907746	NLMTB202080	2500022947	1562.700	2500121457	2315.000	1051091783	1591.000	2500371421	2570.100	2500023158	1590.000
2500907747	NLMTB151512	2500022901	1560.700	2500121456	2314.000	1051091783	1591.000	2500371421	2570.100	2500023158	1590.000
2500907748	NLMTB202012	2500022947	1562.700	2500121457	2315.000	1051091783	1591.000	2500371421	2570.100	2500023158	1590.000
2500907749	NLMTB301512	2500022902	1561.700	2500121458	2316.000	1051091783	1591.000	2500371421	2570.100	2500023158	1590.000
2500907750	NLMTB302012	2500022948	1563.700	2500121458	2316.000	1051091783	1591.000	2500371421	2570.100	2500023158	1590.000
2500907751	NLMTB303012	2500022988	1567.700	2500121458	2316.000	1051091783	1591.000	2500371421	2570.100	2500023158	1590.000
2500907752	NLMTB403012	2500022989	1568.700	2500121459	2317.000	1051091783	1591.000	2500371421	2570.100	2500023158	1590.000

SPECIAL BUILD SERVICE

Newlec Special Build provides a complete design and manufacturing service for control panels built to individual customer requirements.

Call our dedicated phone line on
01924 330 630



Compact Wall Mount Enclosures AE

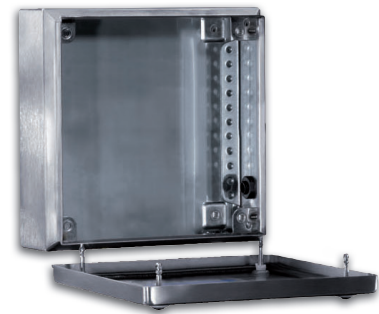
- Stainless steel enclosures include zinc plated steel mounting plate.
- All round foamed-in PU door seal.
- Ingress protection IP66.
- Approvals: UL, CSA, TUV, Lloyds Register of shipping, VDE, Germanischer Lloyd, Russian Maritime Register of shipping, Bureau Veritas.
- Built to EN62208:2011.



Order Code	Model No.	Dimensions (mm)			Door Locks	Weight	Wall Brackets (Qty 4)	
		H	W	D			Order Code	Model No.
2500019778	1002.600	300	200	155	1	4.1	2500118336	2433.000
2500364746	1003.600	300	300	210	1	6.9	2500118336	2433.000
2500116829	1005.600	380	300	210	1	8.4	2500118336	2433.000
2500019794	1006.600	380	380	210	1	9.8	2500118336	2433.000
2500365020	1015.600	500	400	210	2	12.9	2500118336	2433.000
2500116935	1007.600	500	500	210	2	15.7	2500118336	2433.000
2500193959	1013.600	500	500	300	2	18.4	2500118336	2433.000
2500019795	1008.600	600	380	210	2	15.1	2500118336	2433.000
2500364943	1010.500	600	600	210	2	23.5	2500118336	2433.000
2500019797	1012.600	760	600	210	2	30.2	2500118336	2433.000
2500019798	1014.600	760	760	300	2	42.5	2500118336	2433.000
2500019799	1016.600	1000	800	300	2	52.9	2500118336	2433.000

Terminal Box KL

- Stainless steel enclosure with screwed lid.
- All round foamed-in PU cover seal.
- Protection category IP66 to IEC 60 529.
- Quick-action lid fixing screw including plastic bushes.
- Approvals: UL, CSA, TUV, Lloyds Register of shipping, VDE, Germanischer Lloyd, Russian Maritime Register of shipping, Bureau Veritas.
- Built to EN62208:2011.



Order Code	Model No.	Dimensions (mm)			Weight	Wall Brackets (Qty 4)	
		H	W	D		Order Code	Model No.
2500019763	1521.010	150	150	80	1.3	2500117938	1594.000
1051091755	1527.010	150	150	120	1.6	2500117938	1594.000
2500019768	1522.010	150	300	80	1.8	2500117938	1594.000
2500019769	1523.010	200	200	80	1.8	2500117938	1594.000
1051091756	1528.010	200	200	120	2.2	2500117938	1594.000
2500019770	1524.010	200	300	80	2.4	2500117938	1594.000
1051091757	1529.010	200	300	120	2.9	2500117938	1594.000
2500019771	1525.010	200	400	120	3.6	2500117938	1594.000
2500019776	1526.010	300	300	120	3.9	2500117938	1594.000
1051091758	1530.010	300	400	120	4.6	2500117938	1594.000

Floor Standing Enclosures

System Enclosures SE 8



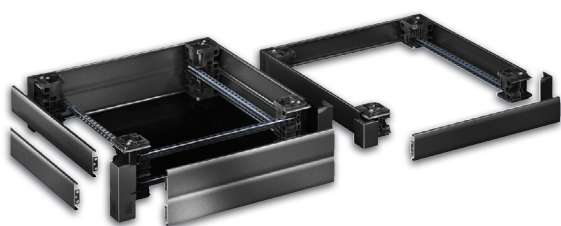
- Enclosure & back plate sheet steel, 1.5 mm, door sheet steel 2.0mm.
- Mounting plate: sheet steel, 3.0mm.
- Colour RAL 7035 powder coated textured finish.
- Mounting plate and gland plates zinc-plated.
- IP 55 to IEC 60 529, complies with NEMA 12.
- Approvals - UL, cUL.
- R/h door hinge with single door enclosures, may be swapped to opposite side.

Supplied with:

- Enclosure with door(s) double-bit lock insert.
- Right hand door hinge with single door enclosures.
- Mounting plate.
- Rear panel (in two pieces from a width 1600 mm), detachable.

Order Code	Model No.	Dimensions (mm)					Door(s)
		Enclosure			Mounting Plate		
		H	W	D	W	H	
1051092650	5830.500	1800	600	400	499	1696	1
1051092651	5831.500	1800	800	400	699	1696	1
1051092652	5832.500	2000	800	400	699	1896	1
1051092653	5833.500	2000	800	500	699	1896	1
1051092654	5834.500	2000	800	600	699	1896	1
1051092655	5840.500	1800	1000	400	899	1696	2
1051092656	5841.500	1800	1200	400	1099	1696	2
1051092657	5842.500	1800	1600	400	1499	1696	2
1051092658	5843.500	2000	1200	400	1099	1896	2
1051092659	5844.500	2000	1200	500	1099	1896	2
1051092660	5845.500	2000	1200	600	1099	1896	2
1051092661	5846.500	2000	1800	500	1699	1896	2

System Enclosures SE 8 Accessories Base/Plinth



- Freely combinable base/plinth system for virtually any application. Because the corner pieces and trim panel are packaged separately, it may be tailored to any application.
- Trim panels supplied as a pair.

Order Code	Model No.	Trim Panels Side (1 Set)				Trim Panels Front/Rear (1 Set)				Corner Blocks (1 Set)			
		Height 100mm		Height 200mm		Height 100mm		Height 200mm		Height 100mm		Height 200mm	
		Order Code	Model No.	Order Code	Model No.	Order Code	Model No.	Order Code	Model No.	Order Code	Model No.	Order Code	Model No.
1051092650	5830.500	1051093140	8100.600	1051093160	8200.600	1051093138	8100.400	1051093158	8200.400	1051093131	8100.000	1051093154	8200.000
1051092651	5831.500	1051093138	8100.400	1051093158	8200.400	1051093142	8100.800	1051093161	8200.800	1051093131	8100.000	1051093154	8200.000
1051092652	5832.500	1051093138	8100.400	1051093158	8200.400	1051093142	8100.800	1051093161	8200.800	1051093131	8100.000	1051093154	8200.000
1051092653	5833.500	1051093139	8100.500	1051093159	8200.500	1051093142	8100.800	1051093161	8200.800	1051093131	8100.000	1051093154	8200.000
1051092654	5834.500	1051093142	8100.800	1051093161	8200.800	1051093140	8100.600	1051093160	8200.600	1051093131	8100.000	1051093154	8200.000
1051092655	5840.500	1051093138	8100.400	1051093158	8200.400	1051093132	8100.010	1051093155	8200.010	1051093131	8100.000	1051093154	8200.000
1051092656	5841.500	1051093138	8100.400	1051093158	8200.400	1051093133	8100.120	1051093156	8200.120	1051093131	8100.000	1051093154	8200.000
1051092657	5842.500	1051093138	8100.400	-	-	1051093134	2x 8100.160	-	-	1051093131	8100.000	1051093154	8200.000
1051092658	5843.500	1051093138	8100.400	1051093158	8200.400	1051093133	8100.120	1051093156	8200.120	1051093131	8100.000	1051093154	8200.000
1051092659	5844.500	1051093139	8100.500	1051093159	8200.500	1051093133	8100.120	1051093156	8200.120	1051093131	8100.000	1051093154	8200.000
1051092660	5845.500	1051093140	8100.600	1051093160	8200.600	1051093133	8100.120	1051093156	8200.120	1051093131	8100.000	1051093154	8200.000
1051092661	5846.500	1051093139	8100.500	-	-	1051093135	2x 8100.180	-	-	1051093131	8100.000	1051093154	8200.000

Baying System TS 8

- Enclosure frame, roof, rear panel, & gland plates sheet steel, 1.5mm, door sheet steel 2.0mm
Mounting plate: sheet steel, 3.0mm.
- Mounting plate and gland plates zinc-plated.
- IP 55 to IEC 60 529, complies with NEMA 12.
- Colour RAL 7035 powder coated textured finish.
- Approvals - UL, cUL, VDE, TÜV, Germanischer Lloyd, Russian Maritime Register of Shipping, Lloyds Register of Shipping, Bureau Veritas.
- Right hand door hinge with single door enclosures, may be swapped to opposite side.



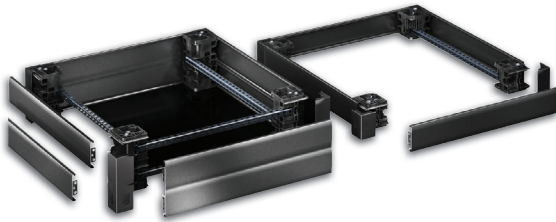
Supplied with:

- Enclosure with door(s) double-bit lock insert.
- Right hand door hinge with single door enclosures.
- Mounting plate.
- Rear panel (in two pieces from a width 1600 mm), detachable.
- Roof plate.
- 4x Eye bolts.

Order Code	Model No.	Dimensions (mm)			Door(s)	Panels					
						Side Depth (Qty 2)		Divide Panels (Qty 1)		Divide panels for Modules (Qty 1)	
						Order Code	Model No.	Order Code	Model No.	Order Code	Model No.
2500362737	8615.500	1200	600	500	1	2500360795	8115.235	-	-	-	-
2500364128	8815.500	1200	800	500	1	2500360795	8115.235	-	-	-	-
2500360802	8215.500	1200	1200	500	2	2500360795	8115.235	-	-	-	-
2500116749	8645.500	1400	600	500	1	2500118142	8145.235	-	-	-	-
2500116754	8845.500	1400	800	500	1	2500118142	8145.235	-	-	-	-
2500116755	8245.500	1400	1200	500	2	2500118142	8145.235	-	-	-	-
2500193875	8665.500	1600	600	500	1	2500360796	8165.235	-	-	-	-
2500195628	8865.500	1600	800	500	1	2500360796	8165.235	-	-	-	-
2500193868	8265.500	1600	1200	500	2	2500360796	8165.235	-	-	-	-
2500116756	8684.500	1800	600	400	1	2500118153	8184.235	2500097140	8609.840	-	-
2500116757	8884.500	1800	800	400	1	2500118153	8184.235	2500097140	8609.840	-	-
2500116758	8084.500	1800	1000	400	1	2500118153	8184.235	2500097140	8609.840	-	-
2500116759	8080.500	1800	1000	400	2	2500118153	8184.235	2500097140	8609.840	-	-
2500116760	8284.500	1800	1200	400	2	2500118153	8184.235	2500097140	8609.840	-	-
2500116761	8685.500	1800	600	500	1	2500118154	8185.235	2500097141	8609.850	2500097152	8609.100
2500195629	8885.500	1800	800	500	1	2500118154	8185.235	2500097141	8609.850	2500097152	8609.100
2500116770	8880.500	1800	800	500	2	2500118154	8185.235	2500097141	8609.850	2500097152	8609.100
2500116771	8285.500	1800	1200	500	2	2500118154	8185.235	2500097141	8609.850	2500097152	8609.100
2500116772	8686.500	1800	600	600	1	2500118167	8186.235	2500097142	8609.860	2500097153	8609.110
2500116773	8886.500	1800	800	600	1	2500118167	8186.235	2500097142	8609.860	2500097153	8609.110
2500116794	8881.500	1800	800	600	2	2500118167	8186.235	2500097142	8609.860	2500097153	8609.110
2500116795	8286.500	1800	1200	600	2	2500118167	8186.235	2500097142	8609.860	2500097153	8609.110
2500116796	8604.500	2000	600	400	1	2500118050	8104.235	2500097140	8609.040	-	-
2500116797	8804.500	2000	800	400	1	2500118050	8104.235	2500097140	8609.040	-	-
2500360788	8004.500	2000	1000	400	2	2500118050	8104.235	2500097140	8609.040	-	-
2500116806	8204.500	2000	1200	400	2	2500118050	8104.235	2500097140	8609.040	-	-
2500116807	8605.500	2000	600	500	1	2500201747	8105.235	2500097141	8609.050	2500097158	8609.120
2500116808	8805.500	2000	800	500	1	2500201747	8105.235	2500097141	8609.050	2500097158	8609.120
2500116809	8005.500	2000	1000	500	2	2500201747	8105.235	2500097141	8609.050	2500097158	8609.120
2500116834	8205.500	2000	1200	500	2	2500201747	8105.235	2500097141	8609.050	2500097158	8609.120
2500116835	8606.500	2000	600	600	1	2500201806	8106.235	2500097142	8609.060	2500097159	8609.130
2500116836	8806.500	2000	800	600	1	2500201806	8106.235	2500097142	8609.060	2500097159	8609.130
2500116837	8006.500	2000	1000	600	2	2500201806	8106.235	2500097142	8609.060	2500097159	8609.130
2500116846	8206.500	2000	1200	600	2	2500201806	8106.235	2500097142	8609.060	2500097159	8609.130
2500116849	8608.500	2000	600	800	1	2500201807	8108.235	2500097151	8609.080	-	-
2500116922	8808.500	2000	800	800	1	2500201807	8108.235	2500097151	8609.080	-	-
2500116923	8208.500	2000	1200	800	2	2500201807	8108.235	2500097151	8609.080	-	-
2500116924	8626.500	2200	600	600	1	2500118129	8126.235	2500097143	8609.260	-	-
2500116925	8826.500	2200	800	600	1	2500118129	8126.235	2500097143	8609.260	-	-
2500116926	8226.500	2200	1200	600	2	2500118129	8126.235	2500097143	8609.260	-	-

Floor Standing Enclosures

Baying System TS 8 Accessories Base/Plinth



Freely combinable base/plinth system for virtually any application. Because the corner pieces and trim panel are packaged separately, it may be tailored to any application.

Trim panels supplied as a pair.

Order Code	Model No.	Trim Panels Side (1 Set)				Trim Panels Front/Rear (1 Set)				Corner Block (1 Set)			
		Height 100mm		Height 200mm		Height 100mm		Height 200mm		Height 100mm		Height 200mm	
		Order Code	Model No.	Order Code	Model No.	Order Code	Model No.	Order Code	Model No.	Order Code	Model No.	Order Code	Model No.
2500362737	8615.500	-	-	1051093159	8200.500	1051093140	8100.600	1051093160	8200.600	1051093131	8100.000	1051093154	8200.000
2500364128	8815.500	1051093139	8100.500	1051093159	8200.500	1051093142	8100.800	1051093161	8200.800	1051093131	8100.000	1051093154	8200.000
2500360802	8215.500	-	-	1051093159	8200.500	1051093133	8100.120	1051093156	8200.120	1051093131	8100.000	1051093154	8200.000
2500116749	8645.500	1051093139	8100.500	1051093159	8200.500	1051093140	8100.600	1051093160	8200.600	1051093131	8100.000	1051093154	8200.000
2500116754	8845.500	-	-	1051093159	8200.500	1051093142	8100.800	1051093161	8200.800	1051093131	8100.000	1051093154	8200.000
2500116755	8245.500	1051093139	8100.500	1051093159	8200.500	1051093133	8100.120	1051093156	8200.120	1051093131	8100.000	1051093154	8200.000
2500193875	8665.500	-	-	1051093159	8200.500	1051093140	8100.600	1051093160	8200.600	1051093131	8100.000	1051093154	8200.000
2500195628	8865.500	1051093139	8100.500	1051093159	8200.500	1051093142	8100.800	1051093161	8200.800	1051093131	8100.000	1051093154	8200.000
2500193868	8265.500	-	-	1051093159	8200.500	1051093133	8100.120	1051093156	8200.120	1051093131	8100.000	1051093154	8200.000
2500116756	8684.500	1051093138	8100.400	1051093158	8200.400	1051093142	8100.800	1051093161	8200.800	1051093131	8100.000	1051093154	8200.000
2500116757	8884.500	-	-	1051093158	8200.400	1051093142	8100.800	1051093161	8200.800	1051093131	8100.000	1051093154	8200.000
2500116758	8084.500	1051093138	8100.400	1051093158	8200.400	1051093132	8100.010	1051093155	8200.010	1051093131	8100.000	1051093154	8200.000
2500116759	8080.500	-	-	1051093158	8200.400	1051093132	8100.010	1051093155	8200.010	1051093131	8100.000	1051093154	8200.000
2500116760	8284.500	1051093138	8100.400	1051093158	8200.400	1051093133	8100.120	1051093156	8200.120	1051093131	8100.000	1051093154	8200.000
2500116761	8685.500	1051093139	8100.500	1051093159	8200.500	1051093140	8100.600	1051093160	8200.600	1051093131	8100.000	1051093154	8200.000
2500195629	8885.500	1051093139	8100.500	1051093159	8200.500	1051093142	8100.800	1051093161	8200.800	1051093131	8100.000	1051093154	8200.000
2500116770	8880.500	1051093139	8100.500	1051093159	8200.500	1051093142	8100.800	1051093161	8200.800	1051093131	8100.000	1051093154	8200.000
2500116771	8285.500	1051093139	8100.500	1051093159	8200.500	1051093133	8100.120	1051093156	8200.120	1051093131	8100.000	1051093154	8200.000
2500116772	8686.500	1051093140	8100.600	1051093160	8200.600	1051093140	8100.600	1051093160	8200.600	1051093131	8100.000	1051093154	8200.000
2500116773	8886.500	1051093142	8100.800	1051093160	8200.800	1051093140	8100.600	1051093160	8200.600	1051093131	8100.000	1051093154	8200.000
2500116794	8881.500	1051093142	8100.800	1051093160	8200.800	1051093140	8100.600	1051093160	8200.600	1051093131	8100.000	1051093154	8200.000
2500116795	8286.500	1051093140	8100.600	1051093160	8200.600	1051093133	8100.120	1051093156	8200.120	1051093131	8100.000	1051093154	8200.000
2500116796	8604.500	-	-	1051093160	8200.600	1051093138	8100.400	1051093158	8200.400	1051093131	8100.000	1051093154	8200.000
2500116797	8804.500	1051093138	8100.400	1051093158	8200.400	1051093142	8100.800	1051093161	8200.800	1051093131	8100.000	1051093154	8200.000
2500360788	8004.500	-	-	1051093158	8200.400	1051093132	8100.010	1051093155	8200.010	1051093131	8100.000	1051093154	8200.000
2500116806	8204.500	1051093138	8100.400	1051093158	8200.400	1051093133	8100.120	1051093156	8200.120	1051093131	8100.000	1051093154	8200.000
2500116807	8605.500	1051093139	8100.500	1051093159	8200.500	1051093140	8100.600	1051093160	8200.600	1051093131	8100.000	1051093154	8200.000
2500116808	8805.500	1051093139	8100.500	1051093159	8200.500	1051093142	8100.800	1051093161	8200.800	1051093131	8100.000	1051093154	8200.000
2500116809	8005.500	1051093139	8100.500	1051093159	8200.500	1051093132	8100.010	1051093155	8200.010	1051093131	8100.000	1051093154	8200.000
2500116834	8205.500	1051093139	8100.500	1051093159	8200.500	1051093133	8100.120	1051093156	8200.120	1051093131	8100.000	1051093154	8200.000
2500116835	8606.500	1051093140	8100.600	1051093160	8200.600	1051093140	8100.600	1051093160	8200.600	1051093131	8100.000	1051093154	8200.000
2500116836	8806.500	1051093142	8100.800	1051093161	8200.800	1051093140	8100.600	1051093160	8200.600	1051093131	8100.000	1051093154	8200.000
2500116837	8006.500	1051093140	8100.600	1051093160	8200.600	1051093132	8100.010	1051093155	8200.010	1051093131	8100.000	1051093154	8200.000
2500116846	8206.500	1051093140	8100.600	1051093160	8200.600	1051093133	8100.120	1051093156	8200.120	1051093131	8100.000	1051093154	8200.000
2500116849	8608.500	-	-	1051093161	8200.800	1051093140	8100.600	1051093160	8200.600	1051093131	8100.000	1051093154	8200.000
2500116922	8808.500	1051093142	8100.800	1051093161	8200.800	1051093142	8100.800	1051093161	8200.800	1051093131	8100.000	1051093154	8200.000
2500116923	8208.500	-	-	1051093161	8200.800	1051093133	8100.120	1051093156	8200.120	1051093131	8100.000	1051093154	8200.000
2500116924	8626.500	1051093140	8100.600	1051093160	8200.600	1051093140	8100.600	1051093160	8200.600	1051093131	8100.000	1051093154	8200.000
2500116925	8826.500	-	-	1051093161	8200.800	1051093140	8100.600	1051093160	8200.600	1051093131	8100.000	1051093154	8200.000
2500116926	8226.500	1051093142	8100.600	1051093160	8200.600	1051093133	8100.120	1051093156	8200.120	1051093131	8100.000	1051093154	8200.000

Fans, Filters & Thermostats

- Fans and filter unit colour RAL 7035.
- Complete filter and fan units ready to install filter mat included.
- For more efficient operation use thermostat.
- Ingress protection IP54.
- Operating voltage 230 VAC 50/60Hz.



Fan Unit		Outlet Filter		Spare Filter Mats (Pack of 5)		Enclosure Internal Thermostat		Fan & Filter Unit Dimensions Wx H (mm)	All Throughput (m ³ /h)		
Order Code	Model No.	Order Code	Model No.	Order Code	Model No.	Order Code	Model No.		Unimpeded	1 x Outlet Filter	2 x Outlet Filter
2500907774	NLFAN20M	2500907732	NLFILTER20	-	-	2500907739	NLENCTHERM	116.5 x 116.5 x 59	20 / 25*	15 / 18*	-
2500907733	NLFAN55M	2500907734	NLFILTER55	2500118223	3322.700	2500907739	NLENCTHERM	148.5 x 148.5 x 74.5	55 / 66*	43 / 50*	48 / 57*
2500907735	NLFAN105M	2500907736	NLFILTER105	2500118224	3171.100	2500907739	NLENCTHERM	204 x 204 x 114	105 / 120*	87 / 100*	93 / 108*

*50/60Hz

Heaters

- PTC heater.
- Quick connect terminals.
- Approvals UR, cUR, CSA.



Order Code	Model No.	Rated Operating Voltage Range (V, Hz)	Dimensions W x H x D (mm)	Continuous Thermal Output at Ambient Temperature of 10°C (W)
2500907737	NLENCH20W	110-240, 50/60	45 x 120 x 46	18 - 20 (50 - 60Hz)
2500907738	NLENCH50W	110-240, 50/60	64 x 155 x 56	49 - 50 (50 - 60Hz)

Note:

For precise temperature control inside the enclosure, we recommend using the enclosure internal thermostat, NLENCTHERM, or the digital enclosure internal temperature display and thermostat, 3114.200.

In order to prevent condensation forming on assemblies, a Hygrostat, 3118.000, is recommended to regulate heating.

In larger enclosures, even heat distribution is best achieved by installing several low-output heaters.

The installation of heaters is generally advisable to prevent condensation.

CUSTOM BUILD SERVICE

For modification of standard product or made to order socket outlet panels and transformers, built to your requirements, please call our helpline.

Newlec Custom Build Helpline:

01952 212 719



Control Panel Cooling Units Blue e+



- 75% energy saved due to speed regulated components and heat pipe technology.
- Suitable for international use due to multi-voltage support.
- Longer service life of the components inside the enclosure and the cooling unit due to component-friendly cooling.
- Intuitive operation due to touch display and intelligent interfaces.
- Temperature control - e+ controller (factory setting +35°C).
- Material - Sheet steel.
- Colour - RAL 7035.
- Protection category IP to IEC 60 529 - External circuit IP24, Internal circuit IP55.

Output Class 2000 – 6000 W

Order Code	2500937351	2500937352	2500937353	2500957354
Model No.	3186.930	3187.930	3188.940	3189.940
Total cooling output 50 Hz L35 L35 to DIN EN 14511 kW	2	2.5	4	6
Total cooling output 50/60 Hz L35 L35 kW	2/2	2.6/2.6	4.2/4.2	5.8/5.8
Total cooling output 50/60 Hz L35 L50 kW	1.29/1.29	1.82/1.82	3.02/3.02	4.2/4.2
Rated operating voltage V, ~, Hz	110 - 240, 1~, 50/60 380 - 480, 3~, 50/60	110 - 240, 1~, 50/60 380 - 480, 3~, 50/60	380 - 480, 3-, 50/60	380 - 480, 3-, 50/60
Width (B) mm	450	450	450	450
Height (H) mm	1600	1600	1600	1600
Depth (T) mm	294	294	393	393
Rated output kW	0.73	1.05	1.3	2.2
Power consumption Pel 50/60 Hz L35 L35 kW	0.57 / 0.57	0.99/0.99	1.21/1.21	2.2/2.2
Power consumption Pel 50/60 Hz L35 L50 kW	0.6/0.6	0.95/0.95	1.28/1.28	2.2/2.2
Operating temperature range	-20°C...+60°C	-20°C...+60°C	-20°C...+60°C	-20°C...+60°C
Setting range	+20°C...+50°C	+20°C...+50°C	+20°C...+50°C	+20°C...+50°C
Energy efficiency ratio (EER) 50 Hz L35 L35 to DIN EN 14511	3.5	2.63	3.46	2.64
Refrigerant g	R134a, 1150	R134a, 1150	R134a, 1750	R134a, 1750
Permissible operating pressure (p. max.) bar	25	25	25	25
Air throughput of fans (unimpeded air flow), Internal circuit/ external circuit m³/h	1250 / 1250	1250 / 1250	2300 / 2300	2300 / 2300
Weight kg	55	55.2	72.4	72.4
Note on Model No.	-	-	Full Internal Mounting Not Possible	Full Internal Mounting Not Possible

Enclosures - Moulded

- Ideal for heavy duty applications in difficult working and climatic conditions.
- IK9 impact resistance.
- Operating temperature: -15°C to +60°C.
- Integral mounting grids and integral sealing gasket.
- RAL 7035 grey.
- Back mounting plate also available.
- Compliance with IEC 670.

Standard IP56

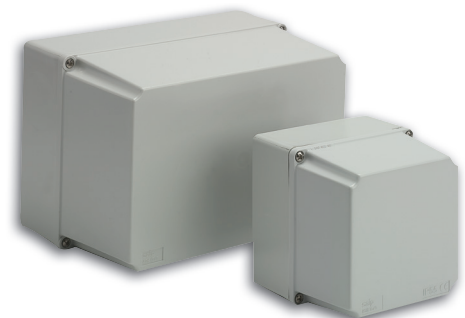
Order Code	Model No.	External Dimensions (mm) H x W x D	Hinged Lid	Back Plate (not included)
1050151831	NLPE10A	100 x 100 x 60	-	-
1050151832	NLPE20A	120 x 80 x 60	-	-
1050151833	NLPE30A	150 x 100 x 60	-	-
1050151834	NLPE40A	190 x 140 x 70	-	NLPEBP40
1050151835	NLPE50A	240 x 190 x 90	-	NLPEBP50
1050151837	NLPE70A	300 x 220 x 120	✓	NLPEBP70
1050151838	NLPE80A	380 x 300 x 120	✓	NLPEBP80



Standard IP56

High Lid IP55

Order Code	Model No.	External Dimensions (mm) H x W x D	Hinged Lid	Back Plate (not included)
1051056588	NLPE15HL	110 x 110 x 112	-	NLPEBP15
1051056589	NLPE30HL	150 x 110 x 150	-	NLPEBP30
1051056590	NLPE35HL	150 x 150 x 150	-	NLPEBP35
1050151836	NLPE60HL	220 x 150 x 150	-	NLPEBP60



High Lid IP55

Clear Lid IP55

Order Code	Model No.	External Dimensions (mm) H x W x D	Hinged Lid	Back Plate (not included)
1051056591	NLPE40CL	190 x 140 x 70	-	NLPEBP40
1051056592	NLPE50CL	240 x 190 x 90	-	NLPEBP50
1051056593	NLPE70CL	300 x 220 x 150	-	NLPEBP70



Clear Lid IP55

Mounting Plates

- Zinc coated, low carbon steel.
- Manufactured to EN 10142.

Order Code	Model No.	To Fit Enclosure
1051056594	NLPEBP15	NLPE15HL
1051056595	NLPEBP30	NLPE30HL
1051056596	NLPEBP35	NLPE35HL
1050151839	NLPEBP40	NLPE40A/CL
1050151840	NLPEBP50	NLPE50A/CL
1050151841	NLPEBP60	NLPE60HL
1050151842	NLPEBP70	NLPE70A/CL
1050151843	NLPEBP80	NLPE80A



Mounting Plates

Branch Network

REXEL

Scotland & N.Ireland	Tel	Postcode
1 Aberdeen North	01224 222 700	AB23 8FE
1 Airdrie	01236 779 080	ML6 9BG
1 Arbroath	01241 431 881	DD11 1RP
1 Ayr	01292 280 880	KA8 8DT
2 Belfast	028 9078 1157	BT3 9BW
4 Belfast	028 9078 1157	BT3 9BW
2 Coleraine	028 703 43329	BT52 2DH
1 Dundee	01382 884 151	DD2 3XD
1 Dunfermline	01383 413 401	KY11 2SL
1 Edinburgh	0131 657 8470	EH15 1TB
1 Edinburgh (West)	0131 453 5182	EH11 4DW
1 Falkirk	01324 624 949	FK2 9EG
5 Falkirk Industrial	01324 624 949	FK2 9EG
1 Fort William	01397 705 794	PH33 6PR
1 Galashiels	01896 753 040	TD1 1PR
1 Glasgow	0141 429 6282	G41 1RB
1 Glasgow (North)	0141 954 1088	G13 1AY
1 Glasgow FM Centre	0845 040 5850	G13 1AY
1 Hamilton	01698 282 728	ML3 9AZ
1 Inverness	01463 221 881	IV1 1SN
1 Kirkcaldy	01592 200 111	KY2 5LJ
1 Lerwick	01595 693 305	ZE1 0DG
1 Livingston	01506 634 689	EH48 2EH
1 Motherwell	01698 843 430	ML4 3NP
1 Oban	01631 565 858	PA34 4PL
1 Orkney	01856 876 876	KW15 1GE
2 Portadown	028 3833 6314	BT62 3EH
1 Stirling	01786 449 644	FK7 7UW

North West	Tel	Postcode
1 Bangor	01248 355 665	LL57 4YH
1 Birkenhead	0151 666 1527	CH41 9HH
1 Blackburn	01254 582 576	BB1 1DJ
1 Burnley	01282 427 731	BB11 5SX
1 Chester	01244 682 800	CH4 8RJ
1 Crewe	01270 588 128	CW1 6FA
1 Ellesmere Port	0151 357 1757	CH65 3AS
1 Lancaster	01524 32 047	LA1 4XS
1 Liverpool	0151 261 0077	L6 1NA
1 Liverpool (Bootle)	0151 933 4624	L20 8BH
1 Oldham	0161 626 0990	OL9 9LH
1 Preston	01772 654 954	PR1 5DP
1 Rochdale	01706 759 477	OL12 0HA
1 Runcorn	01928 578 141	WA7 4US
5 Runcorn Industrial	01928 578 141	WA7 4US
1 Salford	0161 872 4224	M5 4TH
1 Stockport	0161 429 7171	SK1 3UE
4 Stockport	0161 429 7072	SK1 3UE
1 Stoke on Trent	01782 262 141	ST1 4NB
1 Warrington	01925 714 608	WA5 7UW
1 Wigan	01942 492 211	WN3 4DP
1 Wrexham	01978 291 747	LL13 8DT

North East	Tel	Postcode
1 Blyth	01670 540 666	NE24 5TW
1 Bradford	01274 305 646	BD4 8TQ
4 Bradford	01274 305 646	BD4 8TQ
1 Durham	0191 386 6841	DH1 1TF
1 Harrogate	01423 886 338	HG2 7HW
1 Heaton (Newcastle)	0191 276 9300	NE6 5XB
1 Huddersfield	01484 543 131	HD1 5DG
1 Leeds	0113 389 5150	LS12 6DN
5 Leeds Industrial	0113 389 5010	LS12 6DN
1 Newcastle (Gateshead)	0191 495 1000	NE11 9DJ
1 Sheffield	0114 241 3450	S4 7UR
5 Sheffield Industrial	0114 241 3450	S4 7UR
1 Stockton on Tees	01642 260 700	TS18 2QZ
1 Wakefield	01924 381 281	WF1 5QN
1 York	01904 647 031	YO31 7UU

Central & South West	Tel	Postcode
1 Andover	01264 351 117	SP10 3LF
1 Basingstoke	01256 479 174	RG22 4DQ
1 Bath	01225 428 468	BA2 3QS
1 Birmingham	0121 328 9000	B7 5ET
5 Birmingham Industrial	0121 326 5757	B7 5ET
1 Bridgend	01656 668 828	CF31 3RS
1 Bristol	0117 300 3800	BS2 0XJ
1 Cardiff	029 2049 5831	CF24 5PB
1 Carmarthen	01267 233 535	SA31 3RB
1 Cheltenham	01242 523 065	GL51 9LX
1 Dudley	01384 418 900	DY5 1UF
1 Exeter	01392 257 135	EX2 8QW
1 Hereford	01432 265 581	HR4 9RT
1 Kidderminster	01562 755 852	DY10 1HH
1 Lichfield	01543 254 585	WS14 9UX
1 Newport (Gwent)	01633 256 901	NP20 5JJ
1 Newport (I.O.W.)	01983 523 481	PO30 5FA
1 Newton Abbot	01626 355 975	TQ12 4PB
1 Oxford	01865 724 871	OX2 0JT
1 Pembroke Dock	01646 682 254	SA72 4RS
1 Plymouth	01752 737 575	PL6 7PY
1 Portsmouth	023 9266 9711	P03 5RU
1 Salisbury	01722 336 636	SP2 7NR
1 Shirley (Solihull)	0121 745 5564	B90 3AX
1 Shrewsbury	01743 463 352	SY1 3TG
1 Southampton	023 8072 5670	SO15 0AD
1 Swansea	01792 630 200	SA1 5JR
1 Tamworth	01827 312 244	B79 7XD
1 Telford	01952 292 192	TF3 3BJ
1 Wolverhampton	01902 451 654	WV1 2SS
1 Worcester	01905 452 737	WR3 8SG
1 Yate	01454 322 420	BS37 5YS
1 Yeovil	01935 424 683	BA22 8HU

Eastern	Tel	Postcode
1 Boston	01205 351 554	PE21 9HG
1 Braintree	01376 552 916	CM7 2YN
1 Burton on Trent	01283 567 077	DE14 1SG
1 Bury St Edmunds	01284 767 231	IP32 7AB
1 Cambridge	01223 423 204	CB4 0DL
1 Chesterfield	01246 209 781	S40 2TZ
1 Coventry	024 7668 1221	CV6 5NX
1 Derby	01332 341 831	DE24 8JP
1 Doncaster	01302 325 589	DN2 4LP
1 Great Yarmouth	01493 419 500	NR31 0LU
1 Hull	01482 586 555	HU8 8BT
1 Ilkeston	0115 932 9499	DE7 8EF
1 Ipswich	01473 230 404	IP3 8AX
1 King's Lynn	01553 760 611	PE30 4JP
1 Leicester	0116 285 5555	LE2 7SR
1 Luton	01582 416 633	LU1 1LP
1 Mansfield	01623 645 150	NG18 5ES
1 Milton Keynes	01908 261 414	MK8 8DF
1 Northampton	01604 752 300	NN5 5HL
1 Norwich	01603 486 515	NR3 2BT
1 Nottingham	0115 986 6531	NG2 1NA
1 Peterborough	01733 563 261	PE1 5XW
5 Peterborough Industrial	01733 296 116	PE1 5XW
1 Scunthorpe	01724 281 363	DN16 1DQ
1 Spalding	01775 711 363	PE11 3ZN
1 Wisbech	01945 583 712	PE13 2RQ

London & South East	Tel	Postcode
1 Bermondsey	020 7231 4455	SE1 5AN
1 Canary Wharf	0207 537 6330	E14 9UB
1 Canterbury	01227 456 771	CT1 1DX
1 City	020 7253 6162	EC1V 3QU
1 Crawley	01293 517 500	RH10 9RW
4 Crawley	01293 843 559	RH10 9RW
1 Croydon	020 8664 2500	CR0 3HH
1 Dartford	01322 558 922	DA1 4AL
1 Eastbourne	01323 512 000	BN23 6QW
1 Enfield	020 8364 7537	EN3 7TY
1 Feltham	020 8751 1234	TW13 7ES
1 Gravesend	01474 320 800	DA11 8HL
1 Guildford	01483 537 754	GU2 8YT
1 Maidstone	01622 757 374	ME16 0FZ
1 London FM Centre	0208 709 7676	SE1 5AN
1 Park Royal	020 8965 7788	NW10 7UA
1 Reading	0118 941 3141	RG30 6AZ
1 Rochester	01634 290 475	ME2 4LX
1 Romford	01708 374 216	RM3 8UN
1 Sevenoaks	01732 741 241	TN14 5DQ
1 Slough	01753 691 616	SL1 4HB
1 Southend on Sea	01702 617 222	SS2 5TE

Key	
1 Newey & Eyre	4 Specialist Fire & Security
1 Ross Electrical	5 Industrial Competence Centre
2 Dunlop & Hamilton	6 FM Centre
3 Lerwick Engineering	

free information
0800 783 6909
(freephone)

Specialist Products

Specialist Lamps & Lighting Control Gear
Tel: 01905 791 500 Fax: 01905 791 501

Spares Heating & Ventilation
Tel: 01905 791 500 Fax: 01905 791 501

Specialist Fuses
Tel: 01905 791 500 Fax: 01905 791 501

www.neweyandeyre.co.uk

For enquiries, technical support or to place an order contact any of the branch locations listed above

