

Containment Solutions



Wire Basket

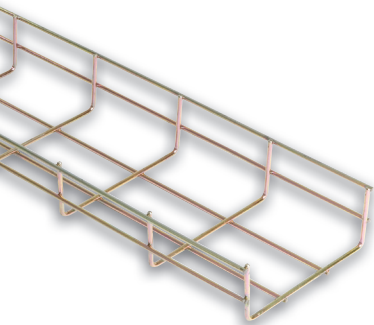
Newlec wire basket cable tray offers a strong, light and easy to install alternative to traditional cable tray systems. Its innovative design includes safety flanges, a manageable 'cut, bend and join' system that adapts easily to any installation layout and saving over 30% installation time. Lightweight construction and fast-fit connectors and accessories make the Newlec wire basket one of the easiest and quickest cable tray systems to install on the market.

Newlec wire basket cable tray meets EN61537, E90 fire performance, UL classification and Class 5 corrosion protection. Newlec wire basket cable tray also has a safety edge that prevents personal injury and cable damage.

- If correctly cut, basket is 'self healing'.
- Enhanced protection against corrosion.
- Safety edge.
- Chrome VI free.
- Compliant with RoHS 2002/95/CE and WEEE 2002/96/CE.



Wire Basket Lengths



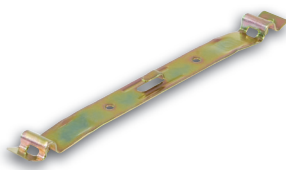
- Safety flanges that prevent damage to cable or installers.
- Manageable 'cut, bend and join' system that adapts easily to any installation with saving of over 30% installation time.
- Lightweight construction for maximum ventilation and cleanliness.
- Provides strength and flexibility.
- Design and structure make it easy to build onsite accessories.
- E90 fire performance.
- Available in 2 depths & 4 widths.
- 3M lengths.
- Bycro finish offering superior corrosion resistance.
- 30% less material compared to traditional sheet steel trays.

CE

1 YR

Order Code	Model No.	Dimensions (mm)
Narrow Depth		
1051013087	NLWB35100	35 x 100
1051013088	NLWB35150	35 x 150
1051013089	NLWB35300	35 x 300
Standard Depth		
1051013090	NLWB60100	60 x 100
1051013091	NLWB60150	60 x 150
1051013092	NLWB60200	60 x 200
1051013093	NLWB60300	60 x 300

Fast Fit Connector



NLWBFFC

- Quick fitting.
- No bolt required.
- No special tools required.
- Guaranteed earth continuity.
- Security tabs are secured with a standard electricians screwdriver.

CE

1 YR

Order Code	Model No.	Description
1051013095	NLWBFFC	Cable Basket Connector

Universal Bracket



NLWBMUB

- Used for attaching accessories or mounting the wire basket to the wall.
- Simple click-fit.
- No bolts required.

CE

1 YR

Order Code	Model No.	Description
1051013094	NLWBMUB	Universal Bracket

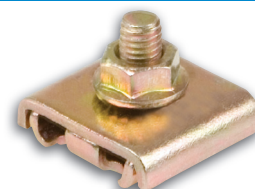
Reinforced Joint Clamp

Order Code	Model No.	Description
1051013096	NLWBRJC	Reinforced Joint Clamp

- Captive bolt.
- Simple 3-part assembly.
- Ensures optimum section loads on wire basket tray sections.
- Superb mechanical performance.

CE

1 YR



NLWBRJC

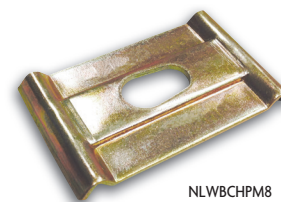
M8 & M10 Hanging Plate

Order Code	Model No.	Description
1051013098	NLWBCHPM8	Hanging Plate

- For supporting wire basket using threaded rod (M8 and M10).
- Can be used as a channel hold down clamp.

CE

1 YR



NLWBCHPM8

Gland Bracket

Order Code	Model No.	Description
1051013097	NLWBCGB	Gland Bracket

- Click fit.
- For conduit, pipes & glands sizes 20mm and 25mm.
- For connecting rigid or flexible conduits.

CE

1 YR



NLWBCGB

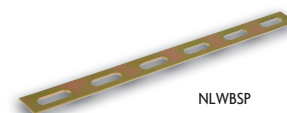
Splice Plate

Order Code	Model No.	Description
1051013099	NLWBSP	Splice Plate

- For joining & supporting bends/joints of wire basket tray.

CE

1 YR



NLWBSP

NEW

FIRE RESISTANT CLIPS, SADDLES AND FIXINGS



A range of
Amendment 3
cable management
accessories



Cable Trunking

- Newlec pre galvanised trunking system is designed for strength and rigidity.
- Offers a complete system with a selection of support fittings and accessories to provide site installation solutions.
- For all your requirements a wide range of accessories are available.
- Quick to install – lids are attached by turnbuckle fixings and with M6 screw fix.
- Impact resistance up to 2J.
- Trunking systems have been developed to comply with BS EN 50085-1: 2005 and BS EN 50085-2-1:2006 cable trunking systems and cable ducting systems for electrical installations.

- Newlec trunking systems are designed so that when they are installed correctly and in normal use, live parts are not accessible.
- All accessories e.g. bends, tees etc. should be directly supported by a suitable support device or devices at appropriate positions.
- The trunking systems are in normal use, passive in respect of electromagnetic influences (emission and immunity).
- Earthing knockouts meet the requirements of EN 61032:1998.
- The system should not be used for equipotential bonding.

NEW Trunking - c/w Lid



NLRU22

- 3M length includes coupler, lid & turnbuckles.
- Quick to install - lids are attached by turnbuckle fixings, with M6 screw fix.
- Integral connectors are included for bends and tees.

1 YR

Order Code	Model No.	Dimensions (mm)
1051115971	NLRU22	50 x 50
1051115972	NLRU33	75 x 75
1051115973	NLRU44	100 x 100
1051115974	NLRU66	150 x 150

NEW Trunking Lid



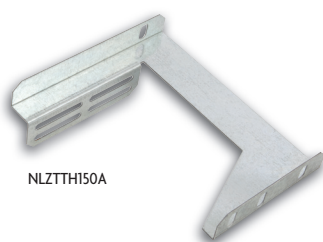
NLRU2LID

- 3M Length.
- Lid supplied separately from complete trunking length if required.

1 YR

Order Code	Model No.	Dimensions (mm)
1051115989	NLRU2LID	50
1051116003	NLRU3LID	75
1051116018	NLRU4LID	100
1051116034	NLRU6LID	150

Cable Tray & Trunking - Hanger Brackets



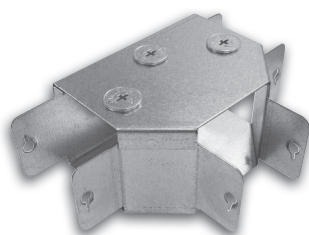
NLZTTH150A

- Suitable for cable tray and trunking.
- Used with M6 & M10 threaded rod.
- Slot for threaded rod fixture allows easy cable tray alignment.
- Zinc plated finish.

1 YR

Order Code	Model No.	Size (mm)
1051047813	NLZTTH100A	100
1051047814	NLZTTH150A	150
1051047815	NLZTTH225A	225
1051047816	NLZTTH300A	300

NEW Trunking - Tee Top Cover



NLRU22GTT

1 YR

Order Code	Model No.	Dimensions (mm)
1051115986	NLRU22GTT	50
1051116001	NLRU33GTT	75
1051116015	NLRU44GTT	100
1051116031	NLRU66GTT	150

NEW Trunking - Flange Coupling

Order Code	Model No.	Dimensions (mm)
1051115977	NLRU22F	50 x 50
1051115993	NLRU33F	75 x 75
1051116008	NLRU44F	100 x 100
1051116024	NLRU66F	150 x 150

1 YR

NLRU22F

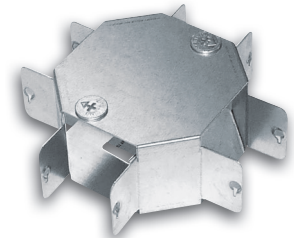


NEW Trunking - Four Way Box Top Cover

Order Code	Model No.	Dimensions (mm)
1051115985	NLRU22GFT	50 x 50
1051116000	NLRU33GFT	75 x 75
1051116014	NLRU44GFT	100 x 100
1051116030	NLRU66GFT	150 x 150

1 YR

NLRU22GFT

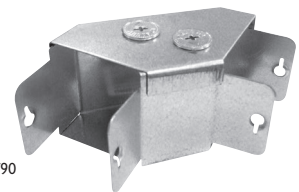


NEW Trunking - 90° Bend Top Cover

Order Code	Model No.	Dimensions (mm)
1051115984	NLRU22GBT90	50 x 50
1051115999	NLRU33GBT90	75 x 75
1051116013	NLRU44GBT90	100 x 100
1051116029	NLRU66GBT90	150 x 150

1 YR

NLRU22GBT90

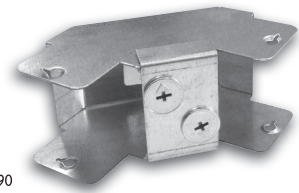


NEW Trunking - 90° Bend Inside Cover

Order Code	Model No.	Dimensions (mm)
1051115980	NLRU22GBI90	50 x 50
1051115996	NLRU33GBI90	75 x 75
1051116010	NLRU44GBI90	100 x 100
1051116026	NLRU66GBI90	150 x 150

1 YR

NLRU22GBI90

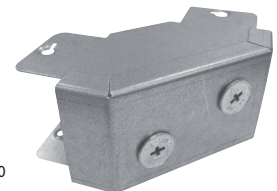


NEW Trunking - 90° Bend Outside Cover

Order Code	Model No.	Dimensions (mm)
1051115982	NLRU22GBO90	50 x 50
1051115997	NLRU33GBO90	75 x 75
1051116011	NLRU44GBO90	100 x 100
1051116027	NLRU66GBO90	150 x 150

1 YR

NLRU22GBO90

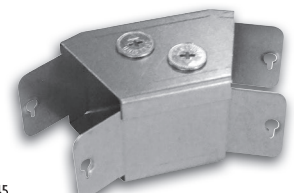


NEW Trunking - 45° Bend Top Cover

Order Code	Model No.	Dimensions (mm)
1051115983	NLRU22GBT45	50 x 50
1051115998	NLRU33GBT45	75 x 75
1051116012	NLRU44GBT45	100 x 100
1051116028	NLRU66GBT45	150 x 150

1 YR

NLRU22GBT45



NEW Trunking - 45° Bend Inside Cover

Order Code	Model No.	Dimensions (mm)
1051115979	NLRU22GBI45	50 x 50

1 YR

NLRU22GBI45

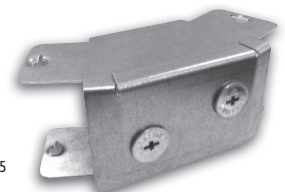


NEW Trunking - 45° Bend Outside Cover

Order Code	Model No.	Dimensions (mm)
1051115981	NLRU22GB045	50 x 50

1 YR

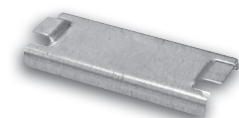
NLRU22GB045



Available to Order

Cable Trunking

NEW Cable Retainers



NLRU2CR

1 YR

Order Code	Model No.	Dimensions (mm)
1051115988	NLRU2CR	50 x 50
1051115993	NLRU3CR	75 x 75
1051116017	NLRU4CR	100 x 100
1051116033	NLRU6CR	150 x 150

NEW Trunking Turnbuckles



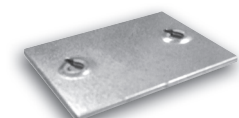
NLUDB2

• Pack of 10.

1 YR

Order Code	Model No.	Dimensions (mm)
1051116035	NLUDB2	Fits All Trunking Sizes

NEW Trunking Couplers

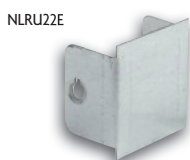


NLRU22C

1 YR

Order Code	Model No.	Dimensions (mm)
1051115975	NLRU22C	50 x 50
1051115991	NLRU33C	75 x 75
1051116006	NLRU44C	100 x 100
1051116022	NLRU66C	150 x 150

NEW End Cap

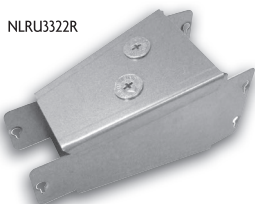


NLRU22E

1 YR

Order Code	Model No.	Dimensions (mm)
1051115976	NLRU22E	50 x 50
1051115992	NLRU33E	75 x 75
1051116007	NLRU44E	100 x 100
1051116023	NLRU66E	150 x 150

NEW Trunking Reducers

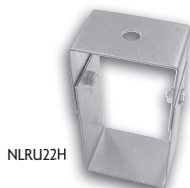


NLRU3322R

1 YR

Order Code	Model No.	Dimensions (mm)
1051115990	NLRU3322R	75 x 75 to 50 x 50
1051116004	NLRU4422R	100 x 100 to 50 x 50
1051116005	NLRU4433R	100 x 100 to 75 x 75
1051116019	NLRU6622R	150 x 150 to 50 x 50
1051116020	NLRU6633R	150 x 150 to 75 x 75
1051116021	NLRU6644R	150 x 150 to 100 x 100

NEW Trunking Hanging Bracket



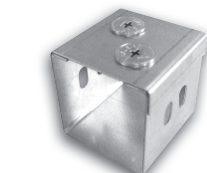
NLRU22H

• 11mm diameter hole for up to M10 threaded rod.

1 YR

Order Code	Model No.	Dimensions (mm)
1051115987	NLRU22H	50 x 50
1051116002	NLRU33H	75 x 75
1051116016	NLRU44H	100 x 100
1051116032	NLRU66H	150 x 150

NEW Fitting Adaptor



NLRU22FCON

1 YR

Order Code	Model No.	Dimensions (mm)
1051115978	NLRU22FCON	50 x 50
1051115994	NLRU33FCON	75 x 75
1051116009	NLRU44FCON	100 x 100
1051116025	NLRU66FCON	150 x 150

NEW Earth Link



NLUEL

• Pack of 10.

1 YR

Order Code	Model No.
1051116036	NLUEL

Available to Order

PREFABRICATION SERVICE

- ✓ Reduce Costs
- ✓ Reduce Waste
- ✓ Improve Site Safety



Newlec now offers a comprehensive prefabrication service ranging from simple cut lengths of channel to complex frames and brackets.

- Less waste of material
- Saving in installation time
- Less space required on site
- Reduction in site labour/cost
- Full conformity to published load data
- Design consultation available

Modules or loops can be factory assembled allowing for improved consistency. Bolted elements comply with required torque settings and welded components are manufactured by coded welders to offer you the best prefabrication service.

For more information please contact your local branch or call our prefabrication service line on:

0121 580 6307

Lines open Monday-Thursday 8.30am to 4.30pm, Friday 8.30am to 4.00pm

Lighting Trunking & Accessories

NEW Lighting Trunking



NLLT2230

- Manufactured from hot-dipped, pre-coated galvanised steel to BS EN 10327 and BS EN 10143.
- Supplied as a 50mm section in 3M lengths.
- Nominal thickness 0.9mm.
- Couplers and lids can be ordered separately.

1 YR

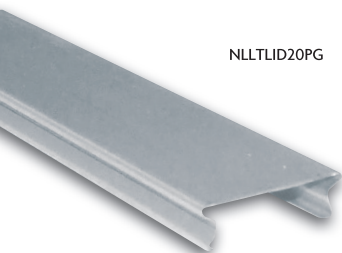
» For trunking hanger brackets see page 4

» For threaded rod see page 15

Order Code Model No.

1051115959 NLLT2230

NEW Lighting Trunking - Cover



NLLTLID20PG

- Available in galvanised steel or rigid, white PVC.
- Clip into the trunking body without the use of tools.
- 2M lengths.

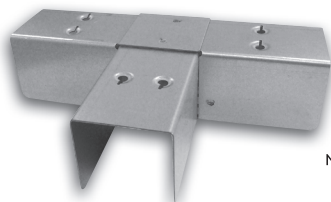
1 YR

Order Code Model No. Colour

1051115961 NLLTLID20PG Galvanised Steel

1051115960 NLLTLID20PL White

NEW Lighting Trunking - Tee Top Cover



NLLT228TT

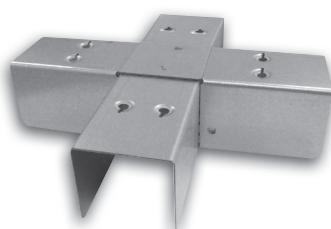
- 50mm x 50mm.

1 YR

Order Code Model No.

1051115965 NLLT228TT

NEW Lighting Trunking - Four Way Top Cover



NLLT22GFT

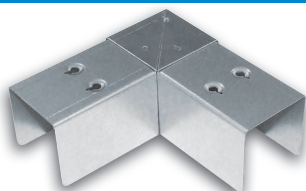
- 50mm x 50mm.

1 YR

Order Code Model No.

1051115966 NLLT22GFT

NEW Lighting Trunking - 90° Bend Top Cover



NLLT228T90

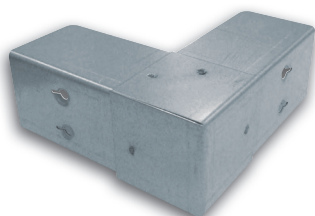
- 50mm x 50mm.

1 YR

Order Code Model No.

1051115964 NLLT228T90

NEW Lighting Trunking - 90° Bend Int & Ext Cover



NLLT228I90

- 50mm x 50mm.

1 YR

Order Code Model No. Type

1051115963 NLLT228O90 External

1051115962 NLLT228I90 Internal

NEW End Cap

Order Code	Model No.
1051115976	NLRU22E

• 50mm x 50mm.

1 YR



NLRU22E

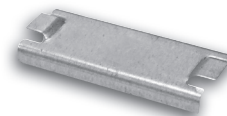
NEW Cable Retainer

Order Code	Model No.
1051115988	NLRU2CR

• Rests within the internal lip of the trunking, easily positioned when cable laying.

• 50mm x 50mm.

1 YR



NLRU2CR

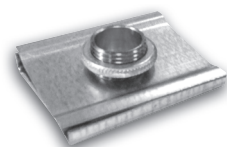
NEW Lighting Attachment

Order Code	Model No.
1051115970	NLLTSUSFIT

• Consists of latch and clamp plate with 20mm brass bush and locknut.

• 50mm x 50mm.

1 YR



NLLTSUSFIT

NEW Coupler

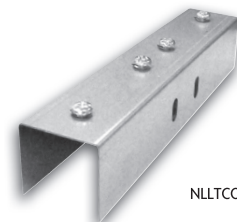
Order Code	Model No.
1051115967	NLLTCOUP

• For joining trunking body sections.

• 50mm x 50mm.

• 240mm length.

1 YR



NLLTCOUP

NEW Suspension Bracket

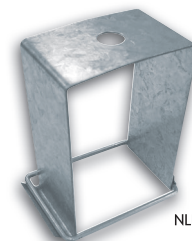
Order Code	Model No.	Suspension Hole Size (mm)
1051115968	NLLTSUS11	10
1051115969	NLLTSUS20	20

• 50mm x 50mm.

• Choice of suspension hole diameters.

• Spring wire clip locks into position by closing a metal tag.

1 YR



NLLTSUS11

NEW Flange

Order Code	Model No.
1051115977	NLRU22F

• 50mm x 50mm.

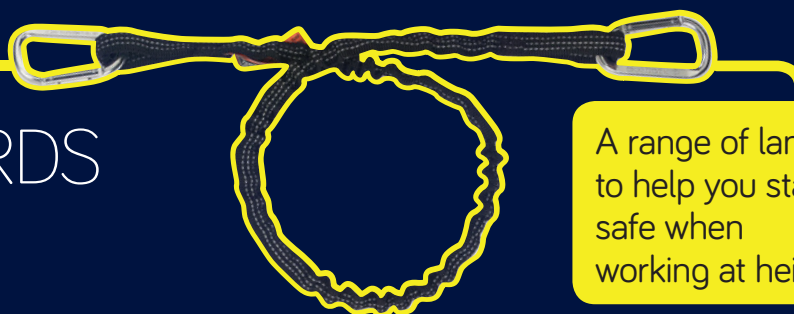
1 YR



NLRU22F

LANYARDS

SEE PAGE 18



A range of lanyards to help you stay safe when working at height



Cable Tray & Accessories

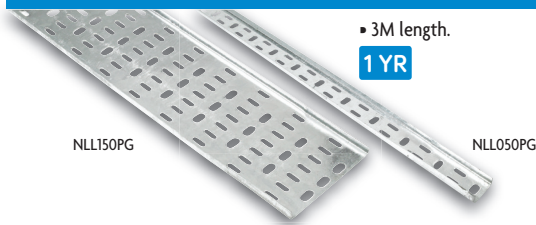
Newlec cable trays are designed as a complete system with simple accessories. Integral connectors are included for bends, tees etc. for all cable tray ranges. The unique perforation pattern in the base of the cable trays allows ease of attachment for cables with more than adequate ventilation. The cable tray ranges have the same footprint that facilitates the set out of cable runs prior to finalisation of design.

The light duty cable tray straights have one end swaged for easy connection to the next tray. When light duty straights are cut to smaller lengths on site, connection to the next tray requires a fish plate.

The medium duty cable tray system have cable friendly return flanges that are also slotted for all widths as standard.

When installing the cable trays care should be taken to ensure accessories eg. bends, tees, crossovers etc. have adequate support with additional supports for larger components.

NEW Cable Tray - Light Duty

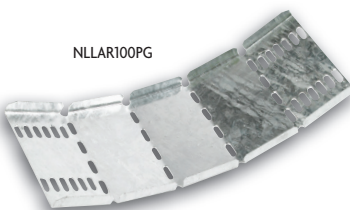


• 3M length.

1 YR

Order Code	Model No.	Size (mm)
1051115876	NLL050PG	50
1051115877	NLL075PG	75
1051115878	NLL100PG	100
1051115879	NLL150PG	150
1051115880	NLL225PG	225
1051115881	NLL300PG	300

NEW Cable Tray - Light Duty Riser

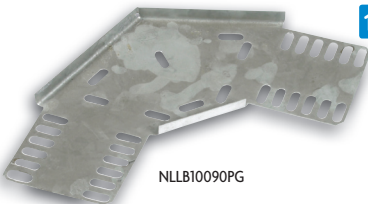


• Flexible risers so they work both up and down from 0° to 90°.

1 YR

Order Code	Model No.	Size (mm)
1051115883	NLLAR50PG	50
1051115888	NLLAR75PG	75
1051115884	NLLAR100PG	100
1051115885	NLLAR150PG	150
1051115886	NLLAR225PG	225
1051115887	NLLAR300PG	300

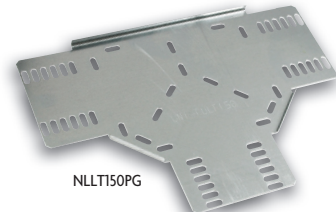
NEW Cable Tray - Light Duty Flat Bend



1 YR

Order Code	Model No.	Size (mm)
1051115889	NLLB05090PG	50
1051115890	NLLB07590PG	75
1051115891	NLLB10090PG	100
1051115892	NLLB15090PG	150
1051115893	NLLB22590PG	225
1051115894	NLLB30090PG	300

NEW Cable Tray - Light Duty Equal Tee



1 YR

Order Code	Model No.	Size (mm)
1051115895	NLLT050PG	50
1051115896	NLLT075PG	75
1051115897	NLLT100PG	100
1051115898	NLLT150PG	150
1051115899	NLLT225PG	225
1051115900	NLLT300PG	300

NEW Cable Tray - Stand Off Brackets



- Fixing hole diameter 12mm.
- 50mm uplift.
- Slotted attachment face for ease of alignment to cable tray.
- Suitable for both light, medium and heavy duty tray.

1 YR

Order Code	Model No.	Type	Size (mm)
1051115938	NLTB050ZP	Top Hat	50
1051115939	NLTB075ZP	Top Hat	75
1051115940	NLTB100ZP	Top Hat	100
1051115941	NLTB150ZP	Top Hat	150
1051115942	NLTB225ZP	"U"	225
1051115943	NLTB300ZP	"U"	300
1051115944	NLTB450ZP	"U"	450
1051115945	NLTB600ZP	"U"	600

Cable Tray - Top Hat Bracket



- Fitted with M6 captive nut for labour saving installation.
- Captive nut can be moved to pick up all cable tray slot arrangements.
- Zinc plated finish.
- Elongated fixing holes suitable for 6mm fixing to assist positioning.

1 YR

Order Code	Model No.	Size (mm)
1051047807	NLZTHB050A	50
1051047808	NLZTHB075A	75
1051047809	NLZTHB100A	100
1051047810	NLZTHB150A	150
1051047811	NLZTHB225A	225
1051047812	NLZTHB300A	300

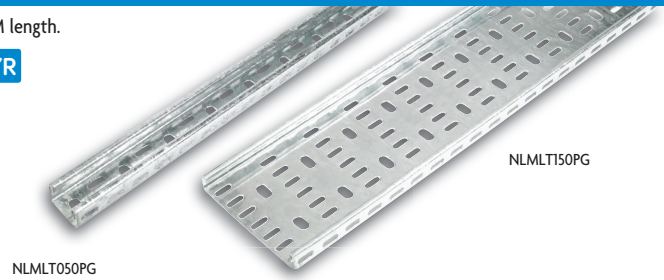
Available to Order

NEW Cable Tray - Medium Duty

Order Code	Model No.	Size (mm)
1051115901	NLMLT050PG	50
1051115902	NLMLT075PG	75
1051115903	NLMLT100PG	100
1051115904	NLMLT150PG	150
1051115905	NLMLT225PG	225
1051115906	NLMLT300PG	300
1051115907	NLMLT450PG	450
1051115908	NLMLT600PG	600

• 3M length.

1 YR

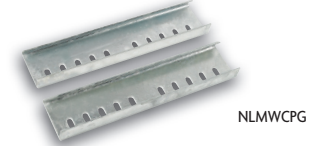


NEW Cable Tray - Medium Duty Couplers

Order Code	Model No.
1051115909	NLMWCPG

- Required for medium duty tray.
- Additional holes for side fixing.
- 1 pair excluding nuts and bolts.

1 YR

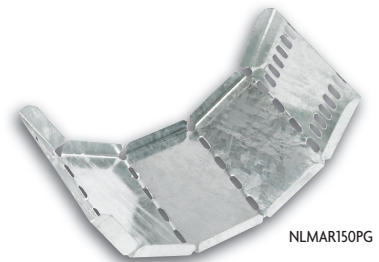


NEW Cable Tray - Medium Duty Risers

Order Code	Model No.	Size (mm)
1051115917	NLMAR075PG	75
1051115918	NLMAR100PG	100
1051115919	NLMAR150PG	150
1051115920	NLMAR225PG	225
1051115921	NLMAR300PG	300
1051115922	NLMAR450PG	450
1051115923	NLMAR600PG	600

- Flexible risers so they work both up and down from 0° to 90°.

1 YR

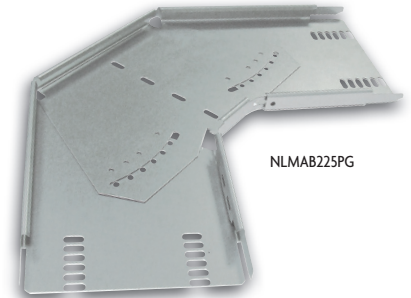


NEW Cable Tray - Medium Duty Adjustable Bend

Order Code	Model No.	Size (mm)
1051115910	NLMAB075PG	75
1051115911	NLMAB100PG	100
1051115912	NLMAB150PG	150
1051115913	NLMAB225PG	225
1051115914	NLMAB300PG	300
1051115915	NLMAB450PG	450
1051115916	NLMAB600PG	600

- Bend adjustable from 30° to 90°.

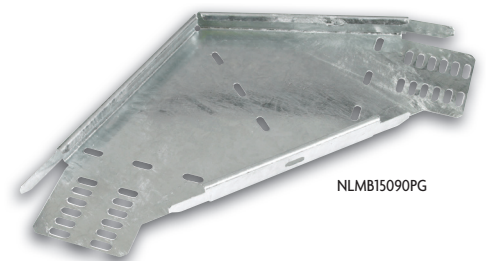
1 YR



NEW Cable Tray - Medium Duty Flat Bends

Order Code	Model No.	Size (mm)
1051115924	NLMB07590PG	75
1051115925	NLMB10090PG	100
1051115926	NLMB15090PG	150
1051115927	NLMB22590PG	225
1051115928	NLMB30090PG	300
1051115929	NLMB45090PG	450
1051115930	NLMB60090PG	600

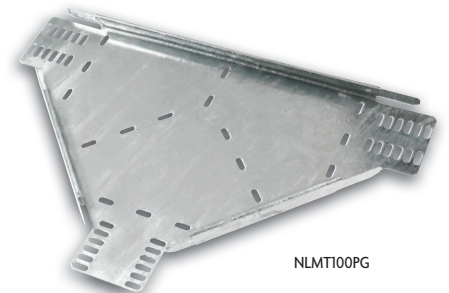
1 YR



NEW Cable Tray - Medium Duty Equal Tee

Order Code	Model No.	Size (mm)
1051115931	NLMT075PG	75
1051115932	NLMT100PG	100
1051115933	NLMT150PG	150
1051115934	NLMT225PG	225
1051115935	NLMT300PG	300
1051115936	NLMT450PG	450
1051115937	NLMT600PG	600

1 YR



NEW Cable Tray - Earth Strap

Order Code	Model No.	Type	Size (mm)
1051115882	NLEB100	Earth Strap c/w Lugs	100

- Fitted with M6 lugs.
- Tin plated braid.

1 YR



Channel Support System

- The ideal solution whenever there is a need to install cable tray, cable ladder, lighting, piping, ducting and many other building services.
- Totally flexible installation system which can be

assembled with the minimum of effort with no welding or on-site fabrication work.

- Includes all of the most popular channels (plain and slotted), brackets, spring nuts and other fastenings.

- Pre-galvanised finish of structural steel to BS EN 10346: 2009.
- Conforms to BS 6946.
- Bracketry to BS EN 10111, BS EN 10025 and hot dipped galvanised to BS EN ISO 1461.

NEW Channel

Available to Order



NLP33003

NLP10006

NLP100T3

NLP100013

NLP33013

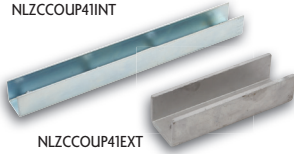
- 2.5mm wall thickness.
 - 3M and 6M lengths.
 - Additional channel profiles are available to order.
 - Special finishes in post dipped galvanised to BS 1461, stainless steel and powder coated available to order.
- N.B. 6M lengths available from selected locations only (minimum carriage paid value may apply)

1 YR

Order Code	Model No.	Type	Size (mm)	Length (M)
Standard Strut				
1051115955	NLP33003	Shallow	21 x 41	3
1051115952	NLP33006	Shallow	21 x 41	6
1051115954	NLP3300T3	Shallow Slotted	21 x 41	3
1051115953	NLP3300T6	Shallow Slotted	21 x 41	6
1051115949	NLP10003	Deep	41 x 41	3
1051115946	NLP10006	Deep	41 x 41	6
1051115948	NLP1000T3	Deep Slotted	41 x 41	3
1051115947	NLP1000T6	Deep Slotted	41 x 41	6
Back to Back				
1051115957	NLP33013	Shallow	2 x 21 x 41	3
1051115956	NLP33016	Shallow	2 x 21 x 41	6
1051115950	NLP10013	Deep	2 x 41 x 41	3
1051115951	NLP10016	Deep	2 x 41 x 41	6

Channel - Couplers

NLZCCOUP41INT



NLZCCOUP41EXT

- For 41 x 41mm slotted or plain channel.
- Internal version tapped and supplied with 4 No. M6 x 12mm roofing bolts.
- External version for more robust requirements and galvanised.
- Internal coupler zinc plated finish.

1 YR

Order Code	Model No.	Type	Size (mm)	Length (mm)
1051047777	NLZCCOUP41INT	Internal Coupler	41 x 41	309
1051047778	NLZCCOUP41EXT	External Coupler	41 x 41	168

Channel - Covers/End Caps



NLZ952



NLZ950WA

1 YR

Order Code	Model No.	Description
End Caps		
1051047776	NLZ951WA	Channel End Cap - White - 41 x 21
1051047775	NLZ950WA	Channel End Cap - White - 41 x 41
Cover		
1051115958	NLP1184PW	Plastic Cover Strip - 3M White

Channel - Lighting Adaptor



NLZ686A

- Zinc plated finish.
- Designed for the suspension of light fittings.

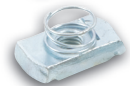
1 YR

Order Code	Model No.	Description
1051047746	NLZ686A	Lighting Adaptor

Spring Nuts



NLZN100A



NLZN102A



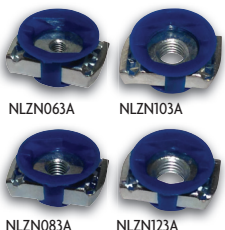
NLZN101A

- Short spring to suit 21 x 41mm channel.
- Long spring to suit 41 x 41mm channel.
- Zinc plated finish.

1 YR

Order Code	Model No.	Type	Size
1051047785	NLZN060A	No Spring	M6
1051047786	NLZN061A	Long Spring	M6
1051047787	NLZN062A	Short Spring	M6
1051047788	NLZN080A	No Spring	M8
1051047789	NLZN081A	Long Spring	M8
1051047790	NLZN082A	Short Spring	M8
1051047791	NLZN100A	No Spring	M8
1051047792	NLZN101A	Long Spring	M10
1051047793	NLZN102A	Short Spring	M10
1051048800	NLZN120A	No Spring	M12
1051048801	NLZN121A	Long Spring	M12
1051048802	NLZN122A	Short Spring	M12

NEW Easyfit Channel Nut



NLZN063A

NLZN103A

NLZN083A

NLZN123A

- Fast installation - Saves over 30% installation time and cost.
- A simple quarter turn with the moulded finger grip secures to strut.
- Once fitted the Easynut moves smoothly along strut for accurate positioning.
- No more springs to untangle or get caught in strut slots when positioning.
- One size of Easyfit nut replaces all 3 types of spring nut.
- Universal fit for all types of strut.

Order Code	Model No.	Description
1052094825	NLZN063A	M6 Channel Nut - BZP
1052094826	NLZN083A	M8 Channel Nut - BZP
1052094827	NLZN103A	M10 Channel Nut - BZP
1052094828	NLZN123A	M12 Channel Nut - BZP

Available to Order

Channel - Cantilever Arms

Order Code	Model No.	Length (mm)
1051047758	NLZ750A	150
1051047759	NLZ752A	300
1051047760	NLZ753A	450
1051047761	NLZ754A	600
1051047762	NLZ755A	750
1051047763	NLZ756A	900
1051056539	NLZ757A	1000

Hot dipped galv. finish.

1 YR

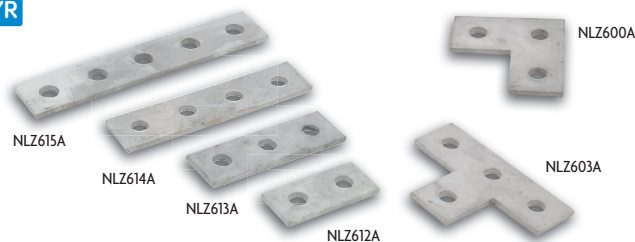


Channel - Flat Brackets

Order Code	Model No.	Description
1051047740	NLZ612A	Straight 2 Hole
1051047741	NLZ613A	Straight 3 Hole
1051047742	NLZ614A	Straight 4 Hole
1051047743	NLZ615A	Straight 5 Hole
1051047744	NLZ600A	"L" 3 Hole
1051047745	NLZ603A	"L" 4 Hole

Hot dipped galv. finish.

1 YR



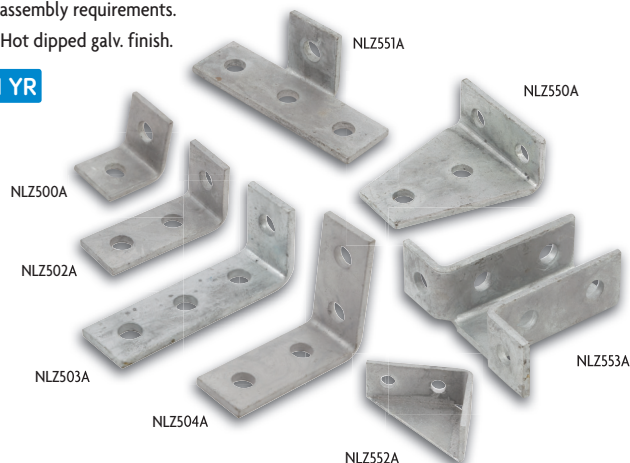
Channel Accessories - 90° Brackets

Order Code	Model No.	Description
1051047728	NLZ500A	1 Hole 1 Hole - "L"
1051047729	NLZ502A	1 Hole 2 Hole - "L"
1051047730	NLZ503A	1 Hole 3 Hole - "L"
1051047731	NLZ504A	2 Hole 2 Hole - "L"
1051047736	NLZ551A	1 Hole 3 Hole - "T"
1051047737	NLZ550A	2 Hole 2 Hole - "L"
1051047738	NLZ552A	2 Hole 2 Hole - Gusset
1051047739	NLZ553A	2 Lug Wing (41 x 41)

The range covers most 90° assembly requirements.

Hot dipped galv. finish.

1 YR



Channel Accessories - Angle Brackets

Order Code	Model No.	Description
1051047751	NLZ510A	Obtuse 2 Hole
1051047752	NLZ511A	Acute 2 Hole

For acute and obtuse 45° assemblies.

Hot dipped galv. finish.

1 YR



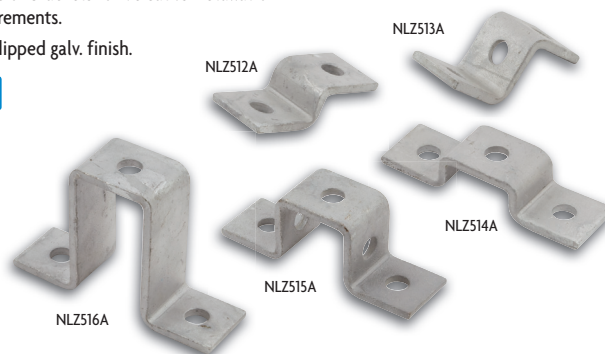
Channel Accessories - Fixing Brackets

Order Code	Model No.	Description
1051047753	NLZ512A	2 hole 21mm "Z" bracket
1051047754	NLZ513A	3 hole 48mm "Z" bracket
1051047755	NLZ514A	3 hole 27mm "U" bracket
1051047756	NLZ515A	3 hole 48mm "U" bracket
1051047757	NLZ516A	3 hole 89mm "U" bracket

Range of brackets for versatile installation requirements.

Hot dipped galv. finish.

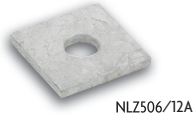
1 YR



*All fixings holes are 14mm diameter unless otherwise stated.

Channel Support System

Channel Accessories - Plates



NLZ506/12A

- Hot dipped galv. finish.

1 YR

Order Code	Model No.	Type	Hole Size	Size (mm)
1051047732	NLZ506/06A	Square	M6	40 x 40
1051047733	NLZ506/08A	Square	M8	40 x 40
1051047734	NLZ506/10A	Square	M10	40 x 40
1051047735	NLZ506/12A	Square	M12	40 x 40

Channel Accessories - Base Plates



NLZ707A

- Base plates for a variety of single and double channel requirements.
- Hot dipped galv. finish.

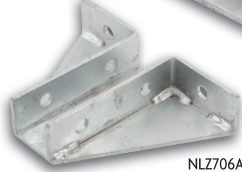
1 YR



NLZ705A



NLZ704A



NLZ706A

Order Code	Model No.	Description
1051047747	NLZ704A	Base Plate Single Channel
1051047748	NLZ705A	Base Plate Double Channel
1051047749	NLZ706A	Base Plate Single Channel Gusset
1051047750	NLZ707A	Base Plate Double Channel Gusset

Channel Accessories - Beam Clamps



NLZ851A



NLZ855A



NLZ854A



NLZ859A



NLZ858A



NLZ852/41 A



NLZ850A



NLZ856A

- Hot dipped galv. finish, except purlin clip which is zinc plated.
- Hole in brackets are 14mm diameter for M12 hexagon head bolt.
- Beam clamps should be used in pairs.
- M10 x 40mm HT8.8 cone point supplied where required as standard.

1 YR

Order Code	Model No.	Description
1051047765	NLZ850A	"C" - Beam Clamp c/w Cone Point - Small
1051047764	NLZ851A	"C" - Beam Clamp c/w Cone Point - Large
1051047769	NLZ854A	"Z" - Beam Clamp c/w Cone Point
1051047772	NLZ856A	"L" - Beam Clamp Toe
1051047774	NLZ859A	Purlin Clip (M10 Rod)
1051047773	NLZ858A	Clamp G (M10 Rod)
1051047766	NLZ852/21A	Bracket Window 41 x 21mm c/w Cone Point
1051047767	NLZ852/41A	Bracket Window 41 x 41mm c/w Cone Point
1051047768	NLZ852/82A	Bracket Window 41 x 82mm c/w Cone Point
1051047770	NLZ855A	Beam Clamp 41 x 41mm U Bolt
1051047771	NLZ857A	Beam Clamp 41 x 82mm U Bolt

*All fixings holes are 14mm diameter unless otherwise stated.

Cone Point Set Screw - HT8.8



Manufactured from high tensile 8.8 steel for ultimate performance.

1 YR

Order Code	Model No.	Description
1051047803	NLZCP1040A	M10 x 40mm Cone Point

Hex Set Screws - HT8.8



NLZS0620A

- Manufactured from high tensile 8.8 steel for ultimate performance.
- Supplied in multiples of 10.

1 YR

Order Code	Model No.	Size
1051047797	NLZS0620A	M6 x 20
1051047798	NLZS0625A	M6 x 25
1051047799	NLZS0825A	M8 x 25
1051047800	NLZS0835A	M8 x 35
1051047801	NLZS1025A	M10 x 25
1051047802	NLZS1035A	M10 x 35

Galvanised Spray Paint



NLGALVPAINT

- Cold galvanising spray paint.
- Used extensively for 'sealing' bare steel, especially where galvanised products have been cut.

* WARNING Flammable product - COSHH restrictions apply. Safety sheet available from your local branch.

1 YR

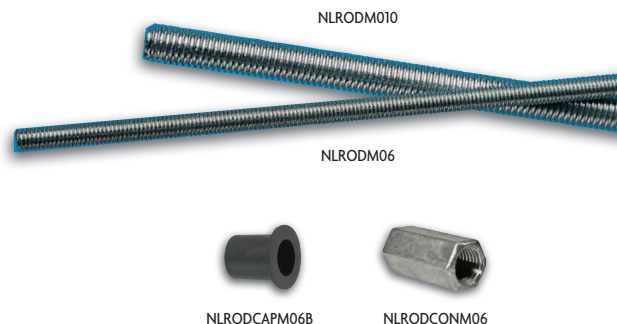
Order Code	Model No.
1000009596	NLGALVPAINT

NEW Threaded Rod

Order Code	Model No.	Description
Threaded Rod		
1051116037	NLRODM06	M6 Threaded Rod
1051116038	NLRODM08	M8 Threaded Rod
1051116039	NLRODM10	M10 Threaded Rod
1051116040	NLRODM12	M12 Threaded Rod
Threaded Rod End Caps		
1051116045	NLRODCAPM06B	M6 Threaded Rod End Caps
1051116046	NLRODCAPM08B	M8 Threaded Rod End Caps
1051116047	NLRODCAPM10B	M10 Threaded Rod End Caps
1051116048	NLRODCAPM12B	M12 Threaded Rod End Caps
Threaded Rod Connectors		
1051116041	NLRODCONM06	M6 Threaded Rod Connector
1051116042	NLRODCONM08	M8 Threaded Rod Connector
1051116043	NLRODCONM10	M10 Threaded Rod Connector
1051116044	NLRODCONM12	M12 Threaded Rod Connector

- 3M length.
- Complies to DIN 975.

1 YR



➤ For suspension & catenary wire see page 17

Hexagon Full Nuts

Order Code	Model No.	Size (mm)
1051047782	NLZHN06A	M6
1051047783	NLZHN08A	M8
1051047784	NLZHN10A	M10
1051048799	NLZHN12A	M12

- Supplied in multiples of 10.

1 YR



Flat/Penny Washers

Order Code	Model No.	Type	Size
1051047779	NLZFW06A	Flat	M6
1051047780	NLZFW08A	Flat	M8
1051047781	NLZFW10A	Flat	M10
1051048798	NLZFW12A	Flat	M12
1051047794	NLZPW06A	Penny	M6
1051047795	NLZPW08A	Penny	M8
1051047796	NLZPW10A	Penny	M10

- Supplied in multiples of 10.

1 YR



Concrete Screw - Threaded Rod Suspension

Order Code	Model No.	Internal Thread Diameter	Drill Required (mm)	Hole Depth (mm)
1051058242	NLCS810	M8 + M10	6	60

- Zinc plated steel, self-tapping screw enables time saving installation.
- Approved for concrete C20/25 to C50/60, cracked, for multiple fixings of non structural applications ETA - 11/0093.
- Bushing has internal thread type M8 and M10.
- Also suitable for concrete C12/15, natural stone and dense structure.
- Supplied in packs of 100.



Wedge Nuts

Order Code	Model No.	Size
1051047804	NLZWN06A	M6
1051047805	NLZWN08A	M8
1051047806	NLZWN10A	M10

- For use in precast concrete sections.
- Supplied in packs of 10.

1 YR



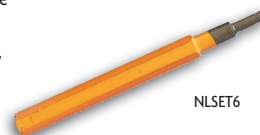
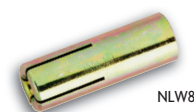
Wedge Anchor - Steel

Order Code	Model No.	Internal Thread Diameter	Drill Required	Hole Depth (mm)
1000008835	NLW6	M6	8mm/NLSDS8	27
1000008836	NLW8	M8	10mm/NLSDS10	32
1000008837	NLW10	M10	12mm/NLSDS12	42

Setting Tools

Order Code	Model No.	Size
1000008838	NLSET6	M6
1000008839	NLSET8	M8
1000008840	NLSET10	M10

- Ideal for securing suspended services such as pipework, ducting and cable tray in concrete.
- Comprises a threaded steel socket and a captive wedge.
- After insertion of the anchor into the hole, it can be expanded by driving the wedge into the socket with the appropriate wedge setting tool - see below.
- Provides flush fixing point in either ceiling, wall or floor surfaces.
- Provides a strong, permanent and reusable female thread in concrete or stone.
- Wedge anchors supplied in packs of 25.



Wire Suspension System

NEW Easylock Wire Suspension System

Up to
60%
Time Saving
on installation vs
traditional method



NLSWTUB

Wire rope suspension is increasingly being used for mounting building services components in commercial, public sector and industrial buildings. There are major advantages of flexible positioning and installation productivity benefits when compared to traditional systems.

The time taken for installation is dramatically reduced compared to that for threaded rods, significantly reducing installation costs.

Another benefit is that where threaded rods are usually mounted vertically, wire rope systems can easily be installed at an angle. This increases the range of suspension points that can be used.

Whether you're suspending cable basket, ladder or tray, Newlec EASYLOCK wire suspension system ensures an efficient solution for suspending electrical services.

- Lightweight.
- Fully adjustable.
- Can be installed vertically or at angles.
- SWL 45kg with a 5:1 safety factor.
- Conforms to DW144 for ductwork.
- Lloyds approval.

Order Code	Model No.	Description	Content
1051091196	NLSW100	Suspension Wire	100M
1051091197	NLSWLOCK	Wire Locking Device + Key	50
1051091198	NLSWTUB	Suspension Kit	100M of Wire, 50 x Lock & Key

Stainless Steel Cable Ties

Amendment 3
Compliant



The ball-lock type stainless steel ties are self locking, requiring no time consuming crimping or folding operations.

- Strong self locking mechanism (stainless steel ball), with low insertion force.
- Suitable for most applications, indoor and outdoor.
- Suitable for high temperature environments -80°C to +3000°C.

• Non-magnetic stainless steel 316 grade (marine grade) for extra corrosion resistance and UV resistant.

• Supplied in packs of 100.

• Applications: installation of cables and pipes in extreme conditions and hazardous areas, such as: petrochemical and food processing industries. Power stations, mining, shipbuilding, offshore and other aggressive environments.

Order Code	Model No.	Length (mm)	Width (mm)	Material Thickness (mm)	Maximum Bundle Diameter (mm)	Minimum Tensile Strength (N)
1051053694	NLTS01SS	100	4.6	0.26	20	440
1051053695	NLTS05SS	200	4.6	0.26	50	440
1051053696	NLTS08SS	300	4.6	0.26	80	440
1051053697	NLTS11SS	360	7.9	0.26	100	1110
1051053698	NLTS12SS	520	7.9	0.26	150	1110
1051053699	NLTS13SS	680	7.9	0.26	200	1110

Stainless Steel Cable Tie Tool



NLSSTCTI

- Robust cutting and tensioning tool for stainless steel ties up to 9mm wide.
- Steel bar lever to cut off cleanly any excess.
- Lightweight and easy to use.
- Moulded grip handles.

Order Code Model No.

1051054849 NLSSTCTI

Catenary Wire Kit

Order Code	Model No.	Description
1051012445	NLCWKITI	Catenary Wire Kit

- Catenary wire kit containing a selection of the most popular Newlec fixings plus 30M of 3mm Newlec wire.

- Kit includes:
 - NLCWSN wire tensioner x 1.
 - NLCWTN thimble x 2.
 - Hook plates x 2.
 - NLCWGN wire rope grips x 4.
 - NLCW30N catenary wire x 30M.

2 YR



Catenary Wire

Order Code	Model No.	Length (M)
1050317596	NLCW30N	30
1050317597	NLCW50N	50
1050317598	NLCW100N	100

- 7 x 7 construction.
- Maximum recommended static load: 190kg.
- 3mm diameter.
- Galvanised mild steel.
- Supplied on a plastic drum.

2 YR



NLCW30N

Catenary Wire - Rope Grip 3mm

Order Code	Model No.
1050317599	NLCWGN

- Grips the return end of 3mm wire rope when in a loop.
- Galvanised finish.
- Supplied in multiples of 10.

2 YR



NLCWGN

Catenary Wire - Tensioner

Order Code	Model No.
1050317602	NLCWSN

- With screw hook and eye (10mm diameter).
- Electro-galvanised finish.
- Expanded length: 245mm maximum.
- Minimum length: 155mm.

2 YR



NLCWSN

Catenary Wire - 2" Plate with Ring

Order Code	Model No.
1050317601	NLCWPN

- Creates a firm anchor point, ideal for fastening and securing.
- Galvanised finish.
- Plate size: 50 x 50mm.

2 YR



NLCWPN

Catenary Wire - Thimble

Order Code	Model No.
1050317600	NLCWTN

- A rope eyelet creating a metal loop at the rope end to prevent wear and tear.
- Electro-galvanised finish.
- Wire rope diameter: 3mm.
- Supplied in multiples of 10.

2 YR



NLCWTN

Safety Lanyards

Falling or accidentally dropped tools still pose a significant risk of serious injury, death or damage in industry today. Regulations apply to all "work at height" where there is any possibility of a tool falling and causing personal injury, regardless of distance. The latest HSE regulations require tools to be tethered to prevent falling. Serious damage may also be caused if tools fall into machinery, stopping production.

Single Carabiner Tool Lanyard



- Stretch cord encased in strong tubular nylon webbing with silver mylar reflective thread.
- Tool loop has adjustable barrel lock which ensures secure fit.
- Aluminium carabiner for belt attachment.
- Maximum safe working capacity 4.5Kg (10lb).
- Colour black.

Order Code	Model No.	Length
1051049563	NLPPECLSTD	35" to 42"

Dual Carabiner Tool Lanyard



- Stretch cord encased in strong tubular nylon webbing with silver mylar reflective thread.
- Aluminium carabiner at either end for tool or belt attachment.
- Maximum safe working capacity 4.5Kg (10lb).
- Colour black.

Order Code	Model No.	Length
1051049565	NLPPECSTD	35" to 42"

Single Carabiner Tool Lanyard Detachable



- Stretch cord encased in strong tubular nylon webbing with silver mylar reflective thread.
- Aluminium carabiner for belt attachment.
- Tool loop supplied with quick release buckle for fast tool change.
- Tool loop has adjustable barrel lock which ensures secure fit.
- NLPPECLPK supplied as a pack of 3 for use with NLPPECDLSTD.
- Colour black.

Order Code	Model No.	Length
1051049569	NLPPECDLSTD	35" to 42"
Tool Loops - Pack of 3		
1051049571	NLPPECLPK	

Wrist Tool Lanyard



- Velcro wrist strap fastening.
- Tool loop has adjustable barrel lock which ensures secure fit.
- Maximum safe working capacity 0.9 Kg (2lb).
- Colour black.

Order Code	Model No.	Wrist Size
1051049568	NLPPEWCLXL	7" to 8 1/2"

Safety Helmet Lanyard



- Easy release clip attachment.
- Colour high visibility green.

➤ Safety helmet not included

Order Code	Model No.	Fitting
1051049573	NLPPEHLC	Clamp

Contour Safety Spectacle

Order Code	Model No.	Description
1052051909	NLPPE01	Clear Lens

- The Contour weighs in at an incredible lightweight 21g, making it one of the lightest safety eye shields ever made.
- Although the Contour is extremely lightweight it is fully approved to the highest European safety standard and guaranteeing class 1 optical performance and quality.
- The polycarbonate lens design ensures an exceptional field of view of over 180° combined with high performance anti-scratch/anti-fog coatings as standard.
- Approved to EN166/170/172 1F CE.



NLPPE01

Clear Safety Spectacle

Order Code	Model No.	Description
1052051913	NLPPE02	Clear Lens

- Can be worn over most prescription spectacles.
- Lightweight wrap around eye shield.
- Curved brow guard and side shields.
- Adjustable temples and indirect ventilation.
- Supplied with neck cord.
- Tested and approved to EN166/169/170 1F CE.

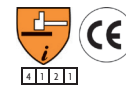


NLPPE02

Nitrile Palm Coated Glove

Order Code	Model No.	Size
1052051868	NLPPEG02M	9
1052051869	NLPPEG02L	10

- Seamless knitted nylon shell with foamed nitrile palm coating, foamed nitrile coating offers good wet and dry grip.
- Seamless liner is comfortable to wear over long periods of time. Close fitting allowing high levels of dexterity.
- Colour - White/Grey.

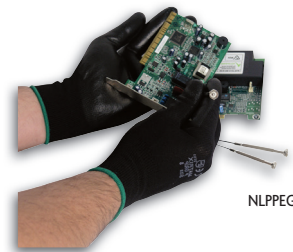


NLPPEG02

Polyurethane Palm Coated Glove

Order Code	Model No.	Size
1052051871	NLPPEG03M	9
1052051872	NLPPEG03L	10

- Seamless black knitted nylon glove with polyurethane coating.
- Seamless for extra comfort and open back allows excellent breathability, designed to be tight fitting to give maximum dexterity for the most tactile of applications.
- Typical handling applications: component handling, general assembly, light engineering work, electronics.
- EN388.
- Colour - Black.



NLPPEG03

Polyamide Palm Coated Glove

Order Code	Model No.	Size
1052051873	NLPPEG04S	8
1052051874	NLPPEG04M	9
1052051875	NLPPEG04L	10

- Cotton/polyamide palm coated gloves with flexible latex coating.
- Excellent grip in both wet and dry conditions for safe and secure handling.
- Typical handling applications: automotive manufacturing, construction, warehousing, local authorities, refuse collection.
- EN388.
- Colour - Cream/Orange.

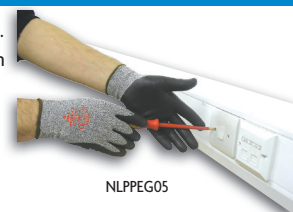


NLPPEG04

Cut Resistant Polyurethane Palm Coated Glove

Order Code	Model No.	Size
1052051876	NLPPEG05S	8
1052051877	NLPPEG05M	9
1052051878	NLPPEG05L	10

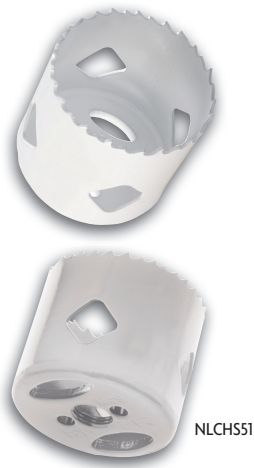
- A seamless cut-resistant liner with polyurethane.
- Polyurethane coating provides excellent abrasion resistance.
- The close fit allows for superior dexterity.
- Seamless liner offers great comfort.
- EN388.



NLPPEG05

Holesaws & Arbors

Holesaws



- Manufactured from M42 cobalt bimetal steel for increased durability.
- Thin kerf design for fast cutting.
- Cats eyes opening for easy plug removal.
- Large diamond cutout for heat dissipation and longer life.
- Fleem ground teeth stay sharp for longer and clears chips for faster cut.
- Can be used in hand held electric/ cordless power tools as well as fixed industrial machines.



Order Code	Model No.	Hole Size (mm)	Hole Size (inches)	Quick Change
1051024021	NLCHS16	16	5/8	-
1051024022	NLCHS20	20	25/32	-
1051024023	NLCHS25	25	1	-
1051024024	NLCHS32	32	1 1/4	✓
1051024025	NLCHS38	38	1 1/2	✓
1051024026	NLCHS51	51	2	✓
1051024027	NLCHS60	60	2 3/8	✓
1051024028	NLCHS64	64	2 1/2	✓
1051024029	NLCHS70	70	2 3/4	✓
NEW 1051091188	NLCHS73	73	2 7/8	✓
1051024030	NLCHS76	76	3	✓
NEW 1051091189	NLCHS79	79	3 1/64	✓
1051024031	NLCHS83	83	3 1/4	✓
1051024032	NLCHS86	86	3 1/3	✓
1051024033	NLCHS102	102	4	✓

Arbors



- Universal arbors to suit all Newlec holesaws.

Order Code	Model No.	Type	Holesaw Size (mm)	Shank Size (mm)	Holesaw Fitting
1000008785	NLAA1	A1	14 - 30	10mm (3/8") Hex	Standard
1000008786	NLAA2	A2	32 - 210	13mm (1/2") Hex	Quick Change
1000008787	NLAA4	A4	14 - 30	6mm (1/4") Round	Standard
1000008788	NLAA10	A10	32 - 210	10mm (3/8") Hex	Quick Change

Drills - HSS Pilot



- Manufactured from high speed steel.
- For all Newlec arbors.
- 6.5mm - (1/4") diameter with flat shank.

Order Code	Model No.	Description	Size (inches)
1000008789	NLAPD1	Short HSS	1/4 x 3 1/16
1000008790	NLAPD2	Long HSS	1/4 x 4

NEW Holesaws - Tungsten



Quicker cut and suitable for stainless steel

- Ultra hard tungsten carbide teeth.
- Fast accurate cutting.
- Complete with ejector spring.
- Suitable for cast iron, steel plate up to 3/16" and stainless steel up to 1/8" thick.
- Longer life.

Order Code	Model No.	Hole Size
1051091190	NLTHS20	20mm
1051091191	NLTHS22	22mm
1051091192	NLTHS25	25mm
1051091193	NLTHS32	32mm
1051115187	NLTHS40	40mm

NEW Dust & Debris Catcher

- Unique patented design collects debris in channels.
- Ideal for downlighter installation and ceiling fixings.
- Self levels on drill to enable one handed operation.
- Reduces hours spent on cleaning up.
- Reduces exposure to airborne debris whilst drilling.



NLHSDC

Order Code	Model No.	Description
1051091194	NLHSDC	Cutting Tool Debris Catcher

Cone Drill

- Perfect for producing an infinite range of hole diameters for versatility in trunking and sheet steel.
- Uninterrupted, ground cutting edges rapidly produce an infinite range of hole diameters for the ultimate versatility.
- Tapered cone design for easily enlarging holes, perfect for problem solving and awkward jobs.
- Self centering drilling action provides a quick and easy trade solution for metal drilling.

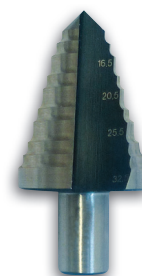


NLCD16-32.5

Order Code	Model No.	Description
1051019514	NLCD16-32.5	16 - 32.5mm Ø

Step Drill

- Perfect for producing consistently accurate holes in trunking and sheet steel.
- 4 drill diameter steps for convenience and multiple hole diameter options (16.5 / 20.5 / 25.5 / 32.5mm).
- Laser etched diameter markings allow repeat production of error free, reliably accurate holes.
- Precision ground, tapered cutting edges allow material up to 3.5mm to be drilled.



NLSD16-32

Order Code	Model No.	Description
1051019509	NLSD16-32	16 - 32mm Ø

NEW Masonry Screws

Order Code	Model No.	Size (mm)	Pack Qty
1051091289	NLMS432	4.8 x 32	100
1051091290	NLMS445	4.8 x 45	100

SDS Masonry Bit Drill

Order Code	Model No.	Size (mm)	Pack Qty
1051091524	NLSDS3.5X160	3.5 x 160	1

- Suitable for rapid anchoring directly into most masonry materials.
- Complies to Amendment 3:2015 (521.200) "Wiring Systems in Escape Routes".
- No wall plug required.
- SDS Drill NLSDS3.5X160 required for accurate fixing of screws.



NLMS432

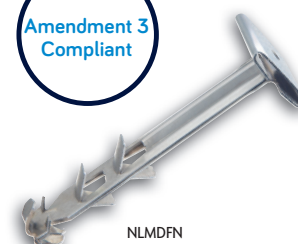
NEW Metal Fastening Nail

Order Code	Model No.	Description	Dimensions (mm)
1051091295	NLMDFN	Push in Fastener	6 x 36

SDS Masonry Bit Drill

Order Code	Model No.	Description	Dimensions (mm)
1061029776	NLSDS6X160	SDS Drill Bit	6 x 160

- Complies to amendment 3:2015 (521.200) "Wiring Systems in Escape Routes".
- Made from Stainless Steel.
- Will hold 4kg up to 120min at 1030°C.
- Cable tie slot in head (9mm).
- Simply drill 6mm hole and fix.
- Pack quantity of 100.



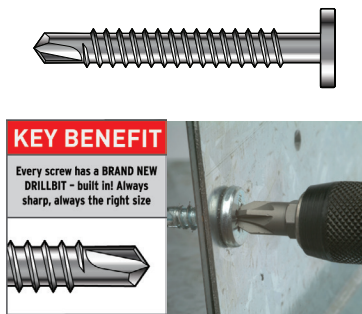
NLMDFN



faster fasteners
for the trade

Orbix screws were designed especially for electricians, with common electrical fastening applications in mind. Orbix self-drilling screws save crucial time on any size of job.

STD - For Metal



KEY BENEFIT

Every screw has a BRAND NEW DRILLBIT - built in! Always sharp, always the right size

For electrical applications that require a fast, one-shot fixing into steel.

- No pre-drilling required.
- No nuts, bolts or spanners.
- No changing drill/drive bits - standard PZ2 Drive.

- Can be removed and re-used.
- Unique Orbix wafer head - will not snag cables.
- Point caps available (order code 1061029481).
- Endless application that requires a fast, one-shot joining of thin steel.

Order Code	Model No.	Description	Length (mm)	Pack Qty
1061029474	OBX-STD-4.8 x 16	Self drilling up to 2.5mm steel	16	200
1061029475	OBX-HD-5.5 x 20	Self drilling up to 3.5mm steel	20	200
1061029476	OBX-HD-5.5 x 40	Self drilling up to 3.5mm steel	40	100

SCT Selection Pack



A quick and easy solution to all your electrical fixing requirements. A comprehensive selection pack containing a range of Orbix low profile head and Orbix multi-wood screws - all packed in a robust plastic case, also includes countersunk and pan head self drilling screws together with the Orbix point caps.

Contains:

- OBX-STD-4.8 x 16
- OBX-HD-5.5 x 20
- OBX-HD-5.5 x 40
- OBX-TFX-4.8 x 25
- OBX-TFX-4.8 x 35
- OBX-TFX-4.8 x 50
- OBX-GP-4.8 x 35
- DS-PAN-4.2 x 13
- DS-PAN-4.8 x 20
- DS-CSK-4.2 x 20
- OBX-POINTCAP-12

Contents may vary.

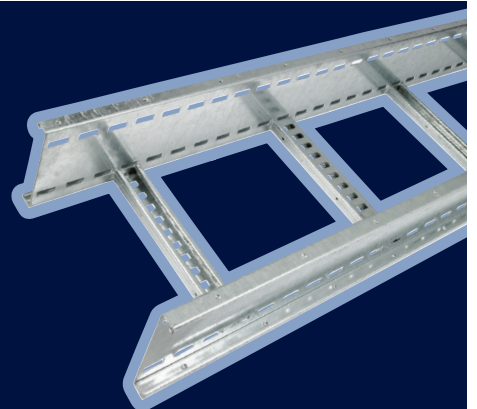
Order Code	Model No.
1050378454	OBX-SCT-PK

CABLE LADDER ALSO AVAILABLE

PLEASE CONTACT YOUR LOCAL
NEWY & EYRE BRANCH



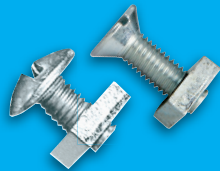
REXEL GROUP



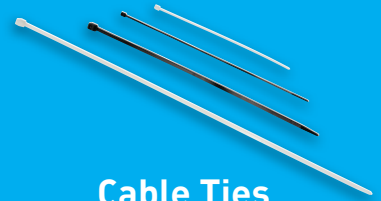
As well as our extensive containment range, at Newey & Eyre we can also offer the following ranges from all the leading manufacturers:



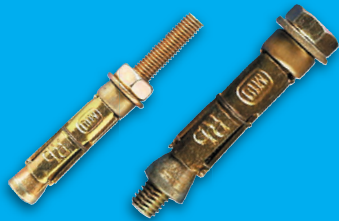
Girder Clips



Roofing Nuts & Bolts



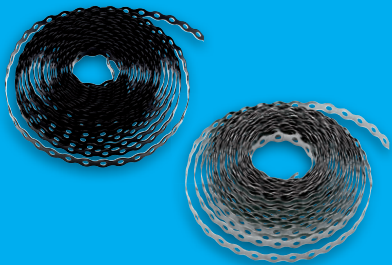
Cable Ties



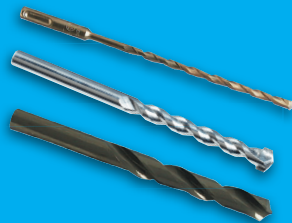
Shield Bolts & Anchors



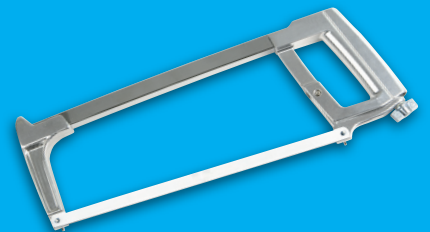
Chemical Anchors



All Round Band



Drill Bits



Hacksaws



PPE



Power Tools

Please contact your local Newey & Eyre branch for further information

Branch Network



Scotland & N.Ireland	Tel	Postcode
1 Aberdeen North	01224 222 700	AB23 8FE
1 Airdrie	01236 779 080	ML6 9BG
1 Arbroath	01241 431 881	DD11 1RP
1 Ayr	01292 280 880	KA8 8DT
2 Belfast	028 9078 1157	BT3 9BW
2 Belfast	028 9078 1157	BT3 9BW
2 Coleraine	028 703 43329	BT52 2DH
1 Dundee	01382 884 151	DD2 3XD
1 Dunfermline	01383 413 401	KY11 2SL
1 Edinburgh	0131 657 8470	EH15 1TB
1 Edinburgh (West)	0131 453 5182	EH11 4DW
● Falkirk	01324 624 949	FK2 9EG
5 Falkirk Industrial	01324 624 949	FK2 9EG
1 Fort William	01397 705 794	PH33 6PR
1 Galashiels	01896 753 040	TD1 1PR
1 Glasgow	0141 429 6282	G41 1RB
1 Glasgow (North)	0141 954 1088	G13 1AY
6 Glasgow FM Centre	0845 040 5850	G13 1AY
1 Hamilton	01698 282 728	ML3 9AZ
1 Inverness	01463 221 881	IV1 1SN
1 Kirkcaldy	01592 200 111	KY2 5LJ
3 Lerwick	01595 693 305	ZE1 0DG
1 Livingston	01506 634 689	EH48 2EH
1 Motherwell	01698 843 430	ML4 3NP
1 Oban	01631 565 858	PA34 4PL
1 Orkney	01856 876 876	KW15 1GE
2 Portadown	028 3833 6314	BT62 3EH
1 Stirling	01786 449 644	FK7 7UW

Northern	Tel	Postcode
● Bangor	01248 355 665	LL57 4YH
● Birkenhead	0151 666 1527	CH41 9HH
● Blackburn	01254 582 576	BB1 1DJ
● Blyth	01670 540 666	NE24 5TW
● Bradford	01274 305 646	BD4 8TQ
4 Bradford	01274 305 646	BD4 8TQ
● Burnley	01282 427 731	BB11 5SX
● Chester	01244 682 800	CH4 8RJ
● Crewe	01270 588 128	CW1 6FA
● Durham	0191 386 6841	DH1 1TF
● Ellesmere Port	0151 357 1757	CH65 3AS
● Harrogate	01423 886 338	HG2 7HW
● Heaton (Newcastle)	0191 276 9300	NE6 5XB
● Huddersfield	01484 543 131	HD1 5DG
● Lancaster	01524 32 047	LA1 4XS
● Leeds	0113 389 5150	LS12 6DN
5 Leeds Industrial	0113 389 5010	LS12 6DN
● Liverpool	0151 261 0077	L6 1NA
● Liverpool (Bootle)	0151 933 4624	L20 8BH
● Newcastle (Gateshead)	0191 495 1000	NE11 9DJ
● Oldham	0161 626 0990	OL9 9LH
● Preston	01772 654 954	PR1 5DP
● Rochdale	01706 759 477	OL12 0HA

● Runcorn	01928 578 141	WA7 4US
5 Runcorn Industrial	01928 578 141	WA7 4US
● Salford	0161 872 4224	M5 4TH
● Sheffield	0114 241 3450	S4 7UR
5 Sheffield Industrial	0114 241 3450	S4 7UR
● Stockport	0161 429 7171	SK1 3UE
4 Stockport	0161 429 7072	SK1 3UE
● Stockton on Tees	01642 260 700	TS18 2QZ
● Stoke on Trent	01782 262 141	ST1 4NB
● Wakefield	01924 381 281	WF1 5QN
● Warrington	01925 714 608	WA5 7UW
● Wigan	01942 492 211	WN3 4DP
● Wrexham	01978 291 747	LL13 8DT
● York	01904 647 031	YO31 7UU

Central & South West	Tel	Postcode
● Andover	01264 351 117	SP10 3LF
● Basingstoke	01256 479 174	RG22 4DQ
● Bath	01225 428 468	BA2 3QS
● Birmingham	0121 328 9000	B7 5ET
5 Birmingham Industrial	0121 326 5757	B7 5ET
● Bridgend	01656 668 828	CF31 3RS
● Bristol	0117 300 3800	BS2 0XJ
● Cardiff	029 2049 5831	CF24 5PB
● Carmarthen	01267 233 535	SA31 3RB
● Cheltenham	01242 523 065	GL51 9LX
● Dudley	01384 418 900	DY5 1UF
● Exeter	01392 257 135	EX2 8QW
● Hereford	01432 265 581	HR4 9RT
● Kidderminster	01562 755 852	DY10 1HH
● Lichfield	01543 254 585	WS14 9UX
● Newport (Gwent)	01633 256 901	NP20 5JJ
● Newport (I.O.W.)	01983 523 481	PO30 5FA
● Newton Abbot	01626 355 975	TQ12 4PB
● Oxford	01865 724 871	OX2 0JT
● Pembroke Dock	01646 682 254	SA72 4RS
● Plymouth	01752 737 575	PL6 7PY
● Portsmouth	023 9266 9711	PO3 5RU
● Salisbury	01722 336 636	SP2 7HL
● Shirley (Solihull)	0121 745 5564	B90 3AX
● Shrewsbury	01743 463 352	SY1 3TG
● Southampton	023 8072 5670	SO15 0AD
● Swansea	01792 630 200	SA1 5JR
● Tamworth	01827 312 244	B79 7XD
● Telford	01952 292 192	TF3 3BJ
● Wolverhampton	01902 451 654	WV1 2SS
● Worcester	01905 452 737	WR3 8SG
● Yate	01454 322 420	BS37 5YS
● Yeovil	01935 424 683	BA22 8HU

Eastern	Tel	Postcode
● Boston	01205 351 554	PE21 9HG
● Braintree	01376 552 916	CM7 2YN
● Burton on Trent	01283 567 077	DE14 1SG
● Bury St Edmunds	01284 767 231	IP32 7AB

● Cambridge	01223 423 204	CB4 0DL
● Chesterfield	01246 209 781	S40 2TZ
● Coventry	024 7668 1221	CV6 5NX
● Derby	01332 341 831	DE24 8JP
● Doncaster	01302 325 589	DN2 4LP
● Great Yarmouth	01493 419 500	NR31 0LU
● Hull	01482 586 555	HU8 8BT
● Ilkeston	0115 932 9499	DE7 8EF
● Ipswich	01473 230 404	IP3 8AX
● King's Lynn	01553 760 611	PE30 4JP
● Leicester	0116 285 5555	LE2 7SR
● Luton	01582 416 633	LU1 1LP
● Mansfield	01623 645 150	NG18 5ES
● Milton Keynes	01908 261 414	MK8 8DF
● Northampton	01604 752 300	NN5 5HL
● Norwich	01603 486 515	NR3 2BT
● Nottingham	0115 986 6531	NG2 1NA
● Peterborough	01733 563 261	PE1 5XW
5 Peterborough Industrial	01733 296 116	PE1 5XW
● Scunthorpe	01724 281 363	DN16 1DQ
● Spalding	01775 711 363	PE11 3ZN
● Wisbech	01945 583 712	PE13 2RQ

London & South East	Tel	Postcode
● Bermondsey	020 7231 4455	SE1 5AN
● Canary Wharf	0207 537 6330	E14 9UB
● Canterbury	01227 456 771	CT1 1DX
● City	020 7253 6162	EC1V 3QU
● Crawley	01293 515 500	RH10 9RW
4 Crawley	01293 843 559	RH10 9RW
● Croydon	020 8664 2500	CR0 3HH
● Dartford	01322 558 922	DA1 4AL
● Eastbourne	01323 512 000	BN23 6QW
● Enfield	020 8364 7537	EN3 7TY
● Feltham	020 8751 1234	TW13 7ES
● Gravesend	01474 320 800	DA11 8HL
● Guildford	01483 537 754	GU2 8YT
● Maidstone	01622 757 374	ME16 0FZ
6 London FM Centre	0208 709 7676	SE1 5AN
● Park Royal	020 8965 7788	NW10 7UA
● Reading	0118 941 3141	RG30 6AZ
● Rochester	01634 290 475	ME2 4LX
● Romford	01708 374 216	RM3 8UN
● Sevenoaks	01732 741 241	TN11 5DQ
● Slough	01753 691 616	SL1 4HB
● Southend on Sea	01702 617 222	SS2 5TE

Key

- Newey & Eyre
- 1 Ross Electrical
- 2 Dunlop & Hamilton
- 3 Lerwick Engineering
- 4 Specialist Fire & Security
- 5 Industrial Competence Centre
- 6 FM Centre



free information
0800 783 6909
(freephone)

Specialist Products

Specialist Lamps & Lighting Control Gear
Tel: 01905 791 500 Fax: 01905 791 501

Spares Heating & Ventilation
Tel: 01905 791 500 Fax: 01905 791 501

Specialist Fuses
Tel: 01905 791 500 Fax: 01905 791 501



www.neweyandeyre.co.uk

For enquiries, technical support or to place an order contact any of the branch locations listed above
Spring 2016



REXEL GROUP